



Farmor's School

FARMOR'S SCHOOL PROSPECTUS

INTEGRITY, FELLOWSHIP & ENDEAVOUR

WELCOME

As a parent I want my children, first and foremost, to enjoy school and to do well. I want school to share my aspirations for them, to treat them as individuals and to recognise their talents and interests. I ask that they are taught well, by teachers who are passionate about their subject, and that they are challenged to achieve their academic potential. I hope they will develop to be responsible, caring and courteous young adults and that the school will support me by insisting on the high standards of behaviour that I expect at home. Is that too much to ask? I think not. I suspect that my expectations are fairly common. You will no doubt add more of your own.

At Farmor's School we recognise that we have a great deal to live up to. We strive to deliver for your children what we would want for our own. Farmor's School offers something unique, which is why some of our students travel a distance to study here; from Swindon, Cricklade and villages from miles around.

Founded in 1738, the school has a sense of history and tradition which few comprehensive schools can lay claim to, this in turn structures our ethos and values. Set in the Cotswold town of Fairford and surrounded by beautiful countryside the school is a calm and pleasant environment for learning. We are a proudly independent, principled and confident school. However, do not be fooled in to thinking that Farmor's School is a sleepy retreat. The school is equipped with excellent facilities including modern science labs, a business conference centre, sports facilities and a new Sixth Form Learning Resource Centre! The thriving arts culture, successful sports teams and outdoor pursuits activities ensure students are engaged in the wider life of the school.

It is this mix of traditional values combined with a forward looking and dynamic outlook that makes Farmor's School a great place to be. We are determined to build further on what has already been achieved. Our greatest successes lie ahead. If you share our aspirations for your children and want to join with us in making Farmor's School an unrivalled place to work and learn, I welcome you and your child to our school.

M. Evans

Matthew Evans, Headmaster



Matthew Evans - Headmaster
mevans@farmors.gloucs.sch.uk

INTEGRITY, FELLOWSHIP & ENDEAVOUR

OUR HERITAGE

Farmor's School opened as Fairford Free School on 24th November 1738. The school was originally established to educate 60 boys aged between 5 and 12. The original schoolhouse, which still stands in the town centre, was funded through donations by Mary Barker, daughter of Andrew Barker, Lord of the Manor of Fairford, and his granddaughter Elizabeth Farmor. The school accepted girls for the first time in 1815, although boys and girls were strictly separated. In 1922, the boys and girls schools were combined under one Headmaster, Herbert Hedges, and the school changed its name to Farmor's Free School. After the Second World War, Farmor's opened its doors to students from Lechlade and surrounding villages. Gloucestershire County Council built a new school in 1961 on the site occupied by the school today; the new school took the name Farmor's School. In 1966, Farmor's School became a comprehensive school, open to all regardless of ability, background or wealth. Over the next 50 years the school expanded, both in terms of buildings and student numbers. Today it educates around 1000 students of age 11 to 19 from as far afield as Swindon, Oxfordshire and Cricklade. Whilst times have changed, the school's original mission to provide a good education to the young people who attend it still stands today. For further information about the school's history, see Fairford History Society's website.

'Excellent! I watched the students arriving for assembly, they were well organised and respectful of each other. I have attended several assemblies this week the students were again polite and respectful and engaged. Full marks from me!'

(Visiting Primary School Headteacher)



WHEN FIRST OPENED, THE SCHOOL ACCEPTED ONLY 50 BOYS FROM THE TOWN OF FAIRFORD. IN 1815, THE SCHOOL BEGAN TO ACCEPT GIRLS IN A SEPARATE SECTION OF THE SCHOOL.



INTEGRITY, FELLOWSHIP & ENDEAVOUR

CURRICULUM & LEARNING

As a comprehensive school, we believe that every child is entitled to a broad and challenging education. We provide a strong academic core curriculum alongside a diverse range of subjects which, as students get older, enable them to pursue their interests and talents.

We value the arts, technology, humanities, languages, sciences and the social sciences equally. This is demonstrated by the free choice of optional subjects we give students at GCSE and A Level. This diversity and choice is a strength as students can pursue their interests and goals.

'Clean, friendly and welcoming, a very enjoyable day.'

GEOGRAPHY

At Farmor's School we understand that fieldwork makes Geography come to life and puts everything into context in glorious 3D. Consequently we try at every key stage to give as many fieldwork experiences as possible at various scales – local, regional, national and international. For example at KS3 we study a local settlement; use our orienteering and map work skills in a local wood; visit farms and investigate new housing developments. At KS4 there's a rural river trip and in contrast a visit to a city environment and the offer of an international residential adventure.

BUSINESS STUDIES

Business Studies is first offered as one of the optional subjects at GCSE level. It is an engaging subject which provides students the opportunity to explore all different aspects of how businesses are run. By studying a variety of topics, from accounting to marketing, we challenge the students to develop a range of skills including data analysis, team working and creativity. Through the use of business case studies, students are able to apply the theory they learn to real life companies. For example, in Year 10 we run a trip to Longleat Safari Park where the students can learn about the strategies used by this successful tourist attraction. We also engage with the local business community and host guest speakers who provide the students with valuable insights into how they set up their own businesses.





MATHEMATICS

At Farmor's we firmly believe that mathematics is for all and we endeavour to stretch all students regardless of their prior achievement. For those students who find mathematics challenging there is additional support and dedicated mathematics TAs.

Enrichment opportunities include ...

A weekly Mathsteaser contest open to all students in years 7-11.
UKMT Mathematics Challenge competition for higher achieving students in years 7-10.

Annual UKMT Mathematics Team challenge for 4 students across year 8 and 9.

HISTORY

At Farmor's we study the history of our locality, our nation and our world. At KS3 we broadly teach chronologically from 1066-2001 except for an in depth study on the British Empire. At GCSE we study Crime and Punishment, Anglo-Saxon and Norman England, Germany 1919-39 and International Relations 1944-1991. The History Department invites in experts to look at topics in depth such as medieval weaponry, runs local trips such as visiting Warwick Castle and trips abroad to the French and Belgian WWI battlefields as well as Berlin.

RELIGIOUS STUDIES

Religious Studies at Farmor's School helps students to understand the complex multi-faith and multicultural world in which they live. It allows them the opportunity to explore the beliefs of the main faith systems and consider how such beliefs help people to make sense of the world and of their

own lives. Students engage with challenging questions about the ultimate meaning and purpose of life, issues of right and wrong and what it means to be human. It helps enable them to discern what is of value within and outside religious traditions and contribute to their own personal development.

SOCIOLOGY & PSYCHOLOGY

After completing Key Stage 3, students are offered two major social science options of Psychology and Sociology and can develop valuable skills such as analysis of evidence, reasoning and evaluation.

Sociology is available at GCSE and at A level. Students at both levels develop a critical approach to understanding social behaviour at the level of small groups up to societies. The main focus is on how our culture and living arrangements influence individual behaviour. Psychology is another fascinating and popular area of study at A level; students develop an understanding of human behaviour and the mental processes explaining how people think, act and feel.

LANGUAGES

Communicating with others in their own language has always been an invaluable skill. Now more than ever getting on with others, understanding their culture and being able to articulate one's own needs are vital.

In the MFL department, we help our students become confident communicators who can hold their own in the workplace, in a social setting or travelling for pleasure.

Our aim is to make language learning an enjoyable and rewarding experience. We offer a variety of visits and exchanges to France and Spain to enable our students to practise their knowledge in an authentic context.

'VERY POLITE STUDENTS AND STAFF, CLEAN AND WELCOMING. WELCOMING AND HELPFUL STAFF. STUDENTS WERE ENGAGED WITH THE SESSION.'



PE & SPORT

Students at Farmor's are encouraged to develop an appreciation of the importance of all aspects of Physical Education including: their physical skills and fitness, their cognitive ability through decision making tasks and their emotional approach to activities. We emphasise resilience, approach behaviours and a growth mindset through a rich curriculum.

We are proud of the success we achieve in extra curricular sport and pride ourselves upon high standards of performance and conduct. We have a strong tradition of house competitions in many sports to encourage participation. Clubs are also offered to all year groups in a vast variety of activities throughout the year and we compete in many local and national competitions in sports ranging from Cross country to Softball.



DRAMA & THEATRE

Drama is a flourishing and popular subject at Farmor's. KS3 students are taught for a double period every week and we offer progression to very successful GCSE and A-Level Drama & Theatre courses. Our rich and varied curriculum engages and encourages students to become confident individuals with the key skills they need for a bright and successful future.

The collaborative nature of Drama provides opportunities for students to develop communication, negotiation, compromise and self-assertion skills. Students develop confidence when speaking and their vocabulary is extended when they adopt roles and characters. Our students also acquire critical and subject-specific vocabulary through reflecting on and appraising their own work and that of others.

We provide a safe environment for students to explore a rich variety of stimuli, working creatively together and problem-solving in groups of various sizes. These skills, along with flexibility, empathy and risk-taking, are intrinsic to our drama practice. We strive to equip students with a toolkit of transferable skills that are recognised as vital in the workplace and throughout adult life.



MUSIC

Music has traditionally been strong at Farmor's with many students taking part in a wide range of music making opportunities both in school and in the community.

During key stage 3 all students take music in a very progressive curriculum. They learn basic musical theory, how to read notation and play a keyboard. The music classroom contains the very latest Apple Mac music technology which means it is inclusive for all students. They learn about a wide range of musical styles from Beethoven and the Beatles to Blues and Reggae.

The department offers a range of extra curricular activities including two choirs, orchestra, jazz band and provides facilities for students to practice with their own bands, students can also learn to play a musical instrument with many different instrumental lessons on offer. Music at Farmor's is fun and for everyone.



D&T

Students have the opportunity, through a variety of creative and practical activities, knowledge, and understanding to engage in an iterative process of designing and making. They are encouraged to think differently about their ideas and

developments in design and technology, its impact on individuals, society and the environment. Students are able to work in a range of contexts applied across all key stages such as Product Design, Food, Fashion and Graphics.





INTEGRITY, FELLOWSHIP & ENDEAVOUR

MORE THAN STUDY:

ENRICHMENT

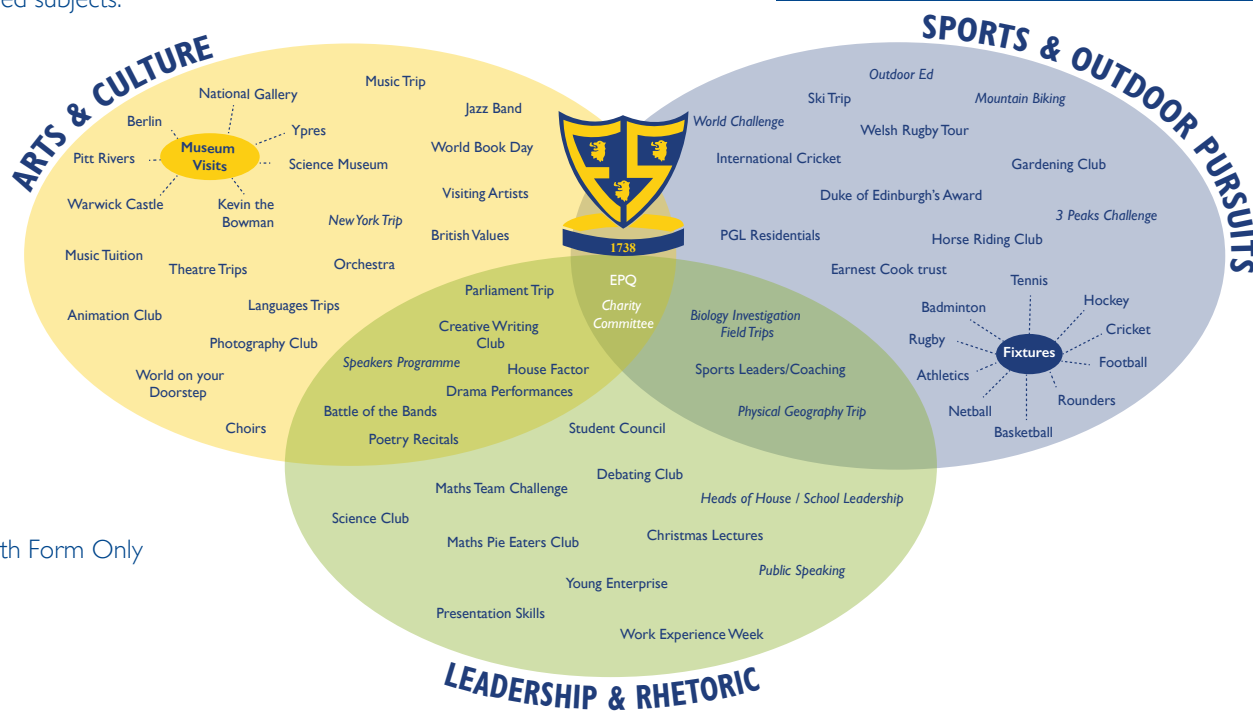
External trips and activities provide learning opportunities that we can't offer on-site, such as outdoor pursuits, group residentials, field-work and museum and cultural experiences. These events give children excellent opportunities to develop, extend and succeed in a way they may not in the classroom. Whether this is through team-building activities, developing stronger peer relationships, or pushing their perceived physical and mental boundaries, the students grow in confidence before our eyes. At Farmor's we nurture an ethos of learning both in and out of the classroom; these co-curricular experiences that create life-long memories are as important as the learning in examined subjects.

DUKE OF EDINBURGH (DofE)

The DofE award gives you the chance to do something completely new and improve on things you're already doing. It takes you out of your comfort zone into a place where you'll push yourself and have amazing new experiences. You'll build confidence, resilience and skills for work. And you'll have a brilliant time doing it. Looking forward, the DofE can help you to carve out a better future. Colleges, universities and employers regard a DofE Award highly so it will help to open the right doors for you.

To complete your award you will need to do one activity for each of the Skills, Volunteering and Physical sections, plus an expedition, and the Gold Awards includes an additional residential. Many of you will already be doing something currently to fill these sections and there are many different options that you can choose from.

We offer Bronze, Silver and Gold levels of the award here at Farmor's School, starting in year 9 through to 6th form.



Italic = 6th Form Only

‘The school was very welcoming, staff very accommodating. Lunch and refreshments were lovely. The students in our class were really attentive and seemed to be engaged and enjoying the session.’

INTERNATIONAL LINKS

Here at Farmor's we are proud of our international dynamic. Each year we run successful trips and exchanges to both France and Spain. Last year, we established links with a school in Bordeaux and one in Montril. Students spent a week in each country, learning about the French and Spanish ways of life and experiencing the differences in their schooling. Culture is an important part of our language teaching and we aim to include cultural elements as often as possible, be that with music, food or trips abroad.

CHARITY COMMITTEE

We support a number of different charities within school ranging from small local charities to larger national charities like Help for Heroes. Any pupil can suggest a charitable activity within school with support from the Charity Committee. The Charity Committee is run by Sixth Form students. Previous activities have included bag packing, sponsored cycles, bake sales and non uniform days.



‘Excellent students, friendly, welcoming and engaged. Site is spacious, open and green!!’

HORSE RIDING CLUB

Farmor's School Equestrian Team competes in various National Schools' Equestrian Association riding competitions. Students take part in a number of different disciplines ranging from Dressage, Show Jumping, Jumping with Style, Eventer's Challenge and One Day Events. All these events range in height and complexity, the Jumping ranging from 60 cm - 1.10m. They compete mainly at weekends at various locations from Hartpury, West Wilts, Rectory Farm, Allen's Hill and Stonar. Students will need their own horse and transport to compete. Usually teams of 4 are entered into the school competitions (the best 3 scores to count), although there is usually an individual competition attached to most events.



INTEGRITY, FELLOWSHIP & ENDEAVOUR



LOCATION

Farmor's School offers something unique, which is why some of our students travel a distance to study here; from Swindon, Cricklade and villages from miles around. Set in the Cotswold town of Fairford and surrounded by beautiful countryside the school is a calm and pleasant environment for learning. We are a proudly independent, principled and confident school.

However, do not be fooled in to thinking that Farmor's School is a sleepy retreat. The school is equipped with excellent facilities including modern science labs, a business conference centre, sports facilities and a new Sixth Form Learning Resource Centre!

The thriving arts culture, successful sports teams and outdoor pursuits activities ensure students are engaged in the wider life of the school.

WHAT VISITORS SAY...

‘A lovely 6th former (I asked for directions) brought me round to reception, he was friendly and helpful.’ (Prospective parent)

We work in many schools and the students here are so positive and questioning, it's a pleasure to support this school. (Social worker)



Well behaved as a group and universally delightful
(guest speaker)

Clean, friendly and welcoming a very enjoyable day.
(local business)

I thought the kids were very well behaved.....some
great engagement with the topics (local business)

Very polite students and staff (teacher from another school)



‘Students were very engaged and have
been a pleasure to teach.’
(Supply teacher)



INTEGRITY, FELLOWSHIP & ENDEAVOUR

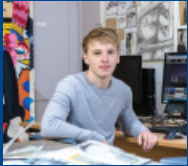


INTEGRITY, FELLOWSHIP & ENDEAVOUR



ALUMNI

STUDENT PROFILE:



Gabe Fryer-Eccles

Previous School Sir Thomas Rich

Studying Fine Art, Maths, Geography & EPQ

Ambition: Architecture at Cambridge University



Hayley Kong

Previous School Isambard. Studying Textiles, Photography, Media, Business and EPQ.



Annabelle Foley.

Previous school Kingshill. Studying Spanish, Psychology and Biology.

Ambitions: language at university.



Lydia Nuttall

Studying Further Mathematics, Mathematics, Physics and French. Previous School Farmor's. Ambition to study Engineering at university.



Fin McClellan

Studied Business, English Language and Literature and Psychology. Now a junior broker at DeVere in Switzerland. Previous school Kingshill.



Harry Waite

Previous School Farmor's. Studied Chemistry, Biology, Maths and Physics. Now studying medicine at Southampton.



Sophia Baker

Previous School Farmor's. Studying English Literature, Drama, History and EPQ. Ambition to study English Literature at university.



Harry Palmer

Previous school Farmor's. Studying Media, Psychology and Business Studies.

Ambition to work within the Media Industry.

A LEVEL SUBJECTS

Art & Design: Fine Art

Art & Design: Digital Photography

Art & Design: Graphics

Biology

Business Studies

Chemistry

Design & Technology: Product Design

Design & Technology: Fashion Design

Drama & Theatre Studies

Economics

English Language and Literature

English Literature

Extended Project Qualification

French

Geography

History

Computing & ICT

Core Mathematics

Mathematics

Further Mathematics

Media Studies

Music

Music Technology

Physical Education

Physics

Psychology

Religious Studies (Philosophy)

Sociology

Spanish

**SIXTH
FORM**

ENRICHMENT

There is no doubt that A levels are important, but employers, universities and colleges are looking for well-rounded, confident and skilled individuals. They are looking beyond grades on a certificate to select their candidates. With the rapidly changing world, we are preparing you for careers and opportunities that may not yet exist. What is equally important to us therefore, is the range of opportunities that we offer you to develop your portfolio of skills and create a growth mind-set that views new challenges positively. We encourage all of you to make the most of these opportunities.

ASPIRE PROGRAMME

If you are aspiring to apply to Oxford, Cambridge or for a Medicine course you are welcome to join our Aspire Programme. There is a range of trips and speakers as well as support with the preparation of the application including reading seminars and tutorials. You will be offered an interview which is filmed for you to keep and review later. This is a highly successful and valued programme tailored to the needs of each individual.



SIXTH FORM OPEN EVENING

WE EXTEND A WARM WELCOME TO ALL STUDENTS WHO COME TO STUDY WITH US FROM GLOUCESTERSHIRE, WILTSHIRE AND BEYOND.

SEE OUR WEBSITE FOR MORE DETAILS

- Receive full course details
- Meet the teaching staff
- Talk to current students
- Discuss the A level courses and other options available

RANKED TOP TEN PERCENT NATIONALLY

For the last 3 years, we have averaged in the top 10% nationally for the progress made by students from GCSE to A Level



Farmor's School
AN ACADEMY

SIXTH FORM

"Thank you for all the help you've given me over the last two years. Moving to Farmor's was the best decision I've ever made and you helped so much with the transition and everything after"

Esme Gourlay, 2015 leaver

PERSONALISED advice, guidance and pastoral support is available to all students. This unrivalled support includes the Aspire Programme for Oxbridge and Medicine students and we are successful in supporting students onto these paths every year.

INDEPENDENCE is vitally important as you prepare for the next steps of your life after A levels. Therefore, we will treat you as an adult from day one, responsible for your choices from how you dress to the targets you set yourself.

We have a unique balance of freedom and academic rigour, of independence and support, of routine and choice. This, coupled **with the breadth of our offer of both A levels and Enrichment Programmes**, attracts students from many different schools. New entrants make up over 20% of the cohort each year.

EXCELLENCE. We are one of the top performing Sixth Forms, not only in Gloucestershire, but in the country. In fact, in 2015 we were fifth highest in England and Wales for the progress our students make from GCSE to A level.

OUTSTANDING purpose-built facilities complement the quality of A level teaching that you will enjoy. Our staff regularly 'go the extra mile' with one-to-one tutorials and mentoring to ensure students reach their potential.



SIXTH FORM

INDEPENDENCE & EXCELLENCE

Head of Sixth Form: Emma White

Deputy Head of Sixth Form:
Sarah Crawford

ndclark@farmors.gloucs.sch.uk
www.farmors.gloucs.sch.uk
01285 712302

