



Farmor's School  
AN ACADEMY

**SIXTH  
FORM**



2020  
SIXTH FORM  
PROSPECTUS  
INDEPENDENCE & EXCELLENCE

# SIXTH FORM LEADERSHIP TEAM



Emma White -  
Head of Sixth Form  
ewhite@farmors.gloucs.sch.uk

Mrs White and Miss Crawford are absolutely amazing in helping me, both academically and in my personal life. They are prepared to help me in what ever way possible and that is truly remarkable.

Student Exit Survey



Sarah Crawford -  
Deputy Head of Sixth Form  
scrawford@farmors.gloucs.sch.uk

## Student Shadow Leadership Team



The Park, Leafield Road, Fairford, Gloucestershire GL7 4JQ Tel: 01285 712302 | Fax: 01285 713504 | [www.farmors.gloucs.sch.uk](http://www.farmors.gloucs.sch.uk)



Clare Orgill -  
Sixth Form Pastoral Administrator  
corgill@farmors.gloucs.sch.uk



Liz Lloyd -  
Careers Coordinator  
llloyd@farmors.gloucs.sch.uk

# WHY CHOOSE FARMOR'S SIXTH FORM?

EXCELLENT  
FACILITIES  
INCLUDING STUDY  
AREAS, SOCIAL  
SPACES AND CAFÉ



UNIQUE LEADERSHIP OPPORTUNITIES  
INCLUDING HEAD BOY AND HEAD GIRL



PERSONALISED TEACHING WITH AN  
AVERAGE CLASS SIZE OF ELEVEN,  
LEADING TO GREAT RESULTS

DIVERSE ENRICHMENT OPPORTUNITIES  
INCLUDING MODEL UNITED NATIONS,  
D OF E GOLD AND FAR MOORS  
MOUNTAIN WALKERS



FLEXIBLE AND INDIVIDUAL SUPPORT  
FOR PROGRESSION TO A WIDE RANGE  
OF DESTINATIONS FROM OXBRIDGE TO  
APPRENTICESHIPS

# CONTENTS

|    |  |
|----|--|
| 2  | SIXTH FORM LEADERSHIP TEAM             |
| 3  | WHY CHOOSE FARMOR'S SIXTH FORM?        |
| 4  | CONTENTS                               |
| 5  | STUDY PROGRAMME                        |
| 6  | ENTRY CRITERIA, APPLICATION PROCESS    |
| 7  | ART & DESIGN: FINE ART                 |
| 8  | ART & DESIGN: DIGITAL PHOTOGRAPHY      |
| 9  | BIOLOGY                                |
| 10 | BUSINESS STUDIES                       |
| 11 | CHEMISTRY                              |
| 12 | COMPUTER SCIENCE                       |
| 13 | DESIGN & TECHNOLOGY:<br>PRODUCT DESIGN |
| 14 | DESIGN & TECHNOLOGY:<br>FASHION DESIGN |
| 15 | DRAMA & THEATRE                        |
| 16 | ECONOMICS                              |
| 17 | ENGLISH LANGUAGE AND LITERATURE        |
| 18 | ENGLISH LITERATURE                     |
| 19 | EXTENDED PROJECT QUALIFICATION         |
| 20 | FOOD SCIENCE AND NUTRITION             |
| 21 | FRENCH                                 |
| 22 | GEOGRAPHY                              |
| 23 | HISTORY                                |
| 24 | CORE MATHS                             |
| 25 | MATHEMATICS                            |
| 26 | FURTHER MATHEMATICS                    |
| 27 | MEDIA STUDIES                          |
| 28 | MUSIC                                  |
| 29 | PHYSICAL EDUCATION                     |
| 30 | PHYSICS                                |
| 31 | PSYCHOLOGY                             |
| 32 | SOCIOLOGY                              |
| 33 | SPANISH                                |
| 34 | TRIPS & VISITS                         |
| 35 | CHOOSING YOUR COURSES                  |
| 36 | NEXT STEPS                             |



# STUDY PROGRAMME

## HOW MANY COURSES CAN I CHOOSE?

**FOUR A LEVELS**

**THREE A LEVELS  
+ EPQ**

**THREE A LEVELS  
+ CORE MATHS**

**THREE A LEVELS**

As well as your academic courses, you will get the opportunity to participate in a wide range of activities that will give you the skills to stand out from the crowd.

### ENRICHMENT

You will have a range of enrichment programmes to choose from including:

- Duke of Edinburgh Gold,
- Sign Language
- Sports Coaching
- Three Peaks Challenge
- Criminology
- Social Committee
- Charity Committee
- Model United Nations

**FIRST AID**

**DRIVE IQ**

**WORK  
EXPERIENCE**

### SPEAKERS PROGRAMME

There is a fortnightly speakers' programme of events from all branches of industry and public life.

These include:

- Alan Rusbridger
- Living and working in war zones
- Mental health awareness
- Canine Partners

### ASPIRE PROGRAMME

If you are aspiring to apply to Oxford, Cambridge or for a Medicine course you are welcome to join our Aspire Programme. There is a range of trips and speakers as well as support with the preparation of the application including reading seminars and tutorials. You will be offered an interview which is filmed for you to keep and review later. This is a highly successful and valued programme tailored to the needs of each individual.



# APPLICATION PROCESS

\* APPLY ONLINE USING THE LINK ON OUR WEBSITE

[www.farmors.gloucs.sch.uk](http://www.farmors.gloucs.sch.uk)

## ENTRY CRITERIA

- A grade 4 in English and Maths plus at least 3 more GCSEs at grade 4 or above. Short courses do not count.
- 4 grades or above in the subjects you are wishing to study at A level though a 5 grade would be desirable.
- Please note that some subjects have specific entry requirements, see the Subject Information pages.

**THURSDAY 19TH  
DECEMBER 2019  
TASTER DAY**

**FRIDAY 16TH  
JANUARY 2020  
APPLICATION  
DEADLINE**

**FEB/MAR  
2020 FORMAL  
INTERVIEW**

**JULY 2020  
PREPARATORY  
INFORMATION  
AND HANDBOOKS**

**THURSDAY 23RD  
AUGUST 2020 GCSE  
RESULTS DAY**

**FRIDAY 24TH  
AUGUST 2020  
ENROLMENT  
DEADLINE**



**NEW ENTRANTS REGULARLY JOIN US FROM MANY DIFFERENT SCHOOLS AND MAKE UP OVER 20% OF OUR STUDENTS EACH YEAR.**

# ART & DESIGN

## FINE ART

### STAFF CONTACT:

**Ms Penny Badger:** pbadger@farmors.gloucs.sch.uk

### COURSE CONTENT:

You will develop skills and techniques in painting, drawing, printing, sculpture and explore the work of artists, designers and crafts people. You will also participate in peer and teacher critiques, learning to talk about work and Fine Art and related ideas. You will also set up your own blog / Instagram to understand how to present work to an audience.

### RESULTS 2019

**A\*-B 80% | A\*-C 100%**



THE QUALITY OF TEACHING HAS BEEN BRILLIANT, AND STAFF REALLY DO CARE ABOUT THE PUPILS AS INDIVIDUALS AND THEIR SUCCESS. THANKS TO EVERYONE FOR PROVIDING SUCH AN EXCELLENT SIXTH FORM.

Parental Exit Survey

### EXAMS:

15-hour exam in Y13 which makes up 40% of the final grade.

Y13 students follow their own personal artistic investigation, supported by their teachers. This includes a 3000-word essay alongside sketchbook development work leading to substantial final pieces. This makes up 60% of the final grade.

### EXAM BOARD: AQA

### CAREER OPPORTUNITIES:

- Art Foundation Course
- Degree courses in Architecture (this course is a requirement for studying Architecture)
- Fashion Design
- Set Design and for Theatre and TV
- All art and design careers such as Animation.

The exam board moderator praised the department for promoting a high level of experimentation and pushing students in the development of their ideas. He also praised the high level of rigour in this course.

### TRIPS, INDUSTRY LINKS AND WORK EXPERIENCE:

Artist and sculptor at Ernest Cook Trust

Visiting artists

Links with Stroud College

Annual trip to such places as Barcelona, Paris, London and St Ives. A different place is visited each year so you will have the chance of at least two trips.

### STUDENT PROFILE:



**Gabe Fryer-Eccles**

Previous School Sir Thomas Rich

Studied Fine Art, Maths, Geography & EPQ

Achieved AAAA\* and is now studying Architecture at UCL

### ENTRY REQUIREMENTS:

Sixth Form entry criteria plus

**Minimum GCSE grade 5 in Graphics, Art or Photography**



# ART & DESIGN

## DIGITAL PHOTOGRAPHY

### STAFF CONTACT:

Mrs Jo Dawson: [jdawson@farmors.gloucs.sch.uk](mailto:jdawson@farmors.gloucs.sch.uk)

### COURSE CONTENT:

You will learn how to take good quality, well composed photographs, looking beyond the lens to use the digital camera as a tool to capture moments in time. You will work on portraiture and landscape projects, completing sketchbooks and boards for a display at the end of Y12. In Y13, you will choose your own genre of photography to research and develop.

### RESULTS: 2019

A\*-B 83% | A\*-C 100%



MY SON HAS ENJOYED THE MATURE RELATIONSHIP HE HAS DEVELOPED WITH STAFF IN 6TH FORM. THERE HAS BEEN A GREAT ATMOSPHERE TO FOSTER INDEPENDENT LEARNING. THANK YOU.

Parental Exit Survey

### EXAMS:

The course is assessed in Y13 through a personal investigation including a 3000-word essay which makes up 60% of the grade and a final exam.

There is also a 15-hour exam, the wide range of topics for which are released in March. Students are supported in preparing for this practical exam from March until May. This makes up 40% of the final grade.

### EXAM BOARD: AQA

### CAREER OPPORTUNITIES:

Sports' Photographer  
Fashion Photographer  
Advertising  
Journalism  
Teaching  
TV Work

### TRIPS, INDUSTRY LINKS AND WORK EXPERIENCE:

Wimbledon Arts Studio: camera skills and portraiture shoot  
Landscape trips to the local area  
Arts trip to London or Europe

### ENTRY REQUIREMENTS:

Sixth Form entry criteria plus

Minimum grade 4 at GCSE in a creative subject

You will need your own Digital SLR camera

A basic knowledge of editing software would be an advantage

### STUDENT PROFILE:



Julia Lange

Previous school Burford

Studying Photography, Business and Fine Art

Ambition to study Business at University





# BIOLOGY

## STAFF CONTACT:

Mr Andrew Rowan: arowan@farmors.gloucs.sch.uk

## COURSE CONTENT:

Areas of study include human biology such as the nervous and endocrine systems as well as genetics. Further study includes cell structure, biological molecules, nucleic acids, enzymes, cell division and organisation. Also covered are means of transport in plants and animals as well as diseases, immune systems, biodiversity, classification and evolution. You will also develop practical skills through a range of activities.

## RESULTS 2019

A\*-B 32% | A\*-C 76% | A\*-E 96%



IT IS CLEAR THE STAFF PUT A GREAT DEAL OF EFFORT IN – CERTAINLY OUR SON SEEMS TO HAVE A LOT OF RESPECT FOR HIS TEACHERS.

Parent email

## EXAMS:

3 exams at the end of Y13 plus a practical assessment course which leads to an endorsement qualification.

**EXAM BOARD:** OCR

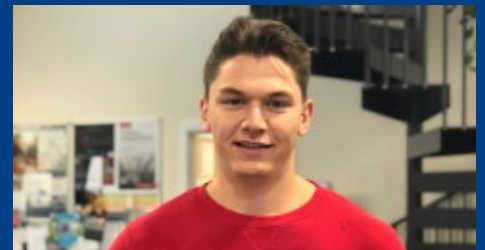
## CAREER OPPORTUNITIES:

Medicine  
Dentistry  
Environmental Science  
Food Industry  
Biochemistry  
Pharmaceutical Industry  
Psychology  
Sports Science  
Biotechnology  
Veterinary Science

## TRIPS, INDUSTRY LINKS AND WORK EXPERIENCE:

Lecture days at Warwick University  
Field trips  
Science Support in Primary School

## STUDENT PROFILE:



**Henry Newman**

Previous school Farmor's

Studied Biology, Physics, Maths and EPQ

Achieved AAAA and is studying Civil Engineering at Bristol University

## ENTRY REQUIREMENTS:

Sixth Form entry criteria plus

**Grades 56 in double science or 556 in triple (6 in Biology) and grade 6 in maths. If grade 5 achieved in maths you should also take the core maths option.**



# BUSINESS STUDIES

## STAFF CONTACT:

Mr Peter Imeson: pimeson@farmors.gloucs.sch.uk

## COURSE CONTENT:

Business Studies will be of interest to anyone who wants a career in business, is thinking of starting their own business or is curious about how businesses are run. The course provides you with the opportunity to study how businesses in the real world operate and how they make decisions. By studying examples of real businesses, you will learn about a diverse range of areas such as marketing, human resources, international business, accounts and business strategy.

## RESULTS 2019

A\*-B: 54% | A\*-C 92% | A\*-E 100%



## THE SUBJECT AND TEACHING IS EXCEPTIONAL.

Student Exit Survey

### EXAMS:

3 exams at the end of Y13

**EXAM BOARD:** Edexcel

### CAREER OPPORTUNITIES:

Business provides a range of knowledge and skills which will be useful in almost any career. These include the ability: to critically analyse business situations and data, to write clearly about business issues, to work effectively as part of a team and to give business presentations.

A-level Business provides the opportunity for a range of options for further study and careers including:

- Business management
- Accountancy
- Human Resources
- Apprenticeships such as at St James's Place
- Sponsored degrees such as PWC Nottingham University

### TRIPS, INDUSTRY LINKS AND WORK EXPERIENCE:

Study a wide range of local, national and international businesses.

Business competitions

Guest speakers

Young Enterprise enrichment

### ENTRY REQUIREMENTS:

Sixth Form entry criteria plus

**Minimum GCSE grade 4 in Business if studied**

## STUDENT PROFILE:



**Pippa Wildern**

Previous school Farmor's

Studied Business Studies, Geography, English Literature and EPQ

Achieved AAAA and is studying Rural Land Management at Royal Agricultural University



# CHEMISTRY

## STAFF CONTACT:

Dr Nicola Crook: [ncrooki@farmors.gloucs.sch.uk](mailto:ncrooki@farmors.gloucs.sch.uk)

## COURSE CONTENT:

This course offers a solid foundation in all aspects of Chemistry. You will explore areas of study that include Organic Chemistry, Inorganic Chemistry and Physical Chemistry. In addition, you will develop a variety of practical skills, including use of scientific equipment, report writing, communication, logical thinking and reasoning as well as researching and managing risk through a range of activities.

## RESULTS 2019

A\*-B 38% | A\*-C 63% | A\*-E 100%



YOU AND THE TEAM HAVE CREATED AN ENVIRONMENT WHICH ENCOURAGES STUDENTS TO DO THEIR BEST, AND THIS HAS MADE AN ENORMOUS DIFFERENCE.

Parent email

## EXAMS:

3 exams at the end of Y13 plus a practical assessment course which leads to an endorsement qualification.

## EXAM BOARD: AQA

## CAREER OPPORTUNITIES:

Chemistry is a valuable subject in the world of work and can open the door to a variety of desirable career paths.

Medicine

Bio Chemistry

Chemical Engineering

Pharmacy

## TRIPS, INDUSTRY LINKS AND WORK EXPERIENCE:

Medical Society links and work experience in a range of hospitals

Range of speakers including Maxillofacial surgeon

Science Live in Birmingham

## STUDENT PROFILE:



### Will Spurway

Previous school Farmor's,

Studied Chemistry, Physics and Maths

Achieved AAA and is studying Medicine at Manchester University

## ENTRY REQUIREMENTS:

Sixth Form entry criteria plus

**Grades 56 in double science or 556 in triple (6 in Chemistry) and grade 6 in maths. If grade 5 achieved in maths you should also take the core maths option.**



# COMPUTER SCIENCE

## STAFF CONTACT:

Mr Martin Alsaigh: malsaigh@farmors.gloucs.sch.uk

## COURSE CONTENT:

This course is designed to develop your knowledge and understanding a range of computing topics which will prepare you to solve complex and challenging tasks. Computer Science is a methodical subject that requires you to be logically minded, inquisitive and with a keen interest in how computers work. This course does not only cover the academic and technical aspects of computing, but it also allows you to use creative skills with software development.

## NEW COURSE FOR 2019



WE REALLY COULDN'T HAVE CHOSEN A BETTER SIXTH FORM AND WILL ALWAYS BE EXTREMELY GRATEFUL TO YOU ALL.

Parent email

## EXAMS/ASSESSMENT

Assessments will take place in the form of:

- an on-screen practical coding - 40%
- a written examination - 40%
- and finally, a non-examination assessment - 20%

## EXAM BOARD: AQA

## CAREER OPPORTUNITY

In recent years, Computer Science has become one of the fastest growing subjects at both GCSE and A Level. It is a sought-after qualification for both universities and employers. Specialist roles could include: cyber security specialist, information systems manager, network engineer, software developer and systems analyst.

Degree in Computer Science

Application analyst.

Applications developer.

Cyber security analyst.

Data analyst.

Database administrator.

Forensic computer analyst.

Games developer.

Information systems manager.

## TRIPS, INDUSTRY LINKS AND WORK EXPERIENCE:

Workshops on Cyber security

Workshops on programming

Trips to Oxford University

University of Gloucestershire

GCHQ



## ENTRY REQUIREMENTS:

Sixth Form entry criteria plus

**A keen interest in IT and how to use applications more effectively**

**Grade 6 Computer Science**

**Grade 6 Mathematics**

# DESIGN & TECHNOLOGY: PRODUCT DESIGN

## STAFF CONTACT:

Mrs Christine Bass: cbass@farmors.gloucs.sch.uk

## COURSE CONTENT:

This course is a creative and thought provoking qualification which will give you practical skills, theoretical knowledge and confidence to succeed in a number of design related careers. You will investigate historical, cultural and economic influences of design as well as how technology has influenced products we use every day. You will also explore the design and creation of products for the future.

## RESULTS 2019

A\*-B 50% | A\*-C 100%



VERY PLEASED WITH LEVEL OF COMMITMENT THE TEACHERS PUT IN TO HELP THE STUDENTS. A HUGE THANK YOU FOR ALL YOU DO!

Parental Exit Survey

## EXAMS:

25% core design principles written exam

25% specialist knowledge and skills written exam

50% practical design and make exam

**EXAM BOARD:** AQA

## CAREER OPPORTUNITIES:

Business management degree

Product Design

Engineering

Degrees in design related courses

Apprenticeships

Manufacturing

## TRIPS, INDUSTRY LINKS AND WORK EXPERIENCE:

Cardiff University Fab Lab

Warwick University Workshops

Design Museum

Jaguar and Honda

Gloucestershire University

Cardiff University

Design trips to regularly offered.

## STUDENT PROFILE:



**Tabitha Roberts**

Previous school Kingshill

Studying Product Design, Psychology, Business and EPQ

Ambition to study Product Design at University

## ENTRY REQUIREMENTS:

Sixth Form entry criteria plus

**Minimum GCSE grade 5 in a design related subject such as Resistant Materials, Graphic Design, Product Design, Fine Art, Textiles or Photography**



# DESIGN & TECHNOLOGY: FASHION & TEXTILES

## STAFF CONTACT:

Mrs Claire Andrews-Alsaigh:  
candrews-alsaigh@farmors.gloucs.sch.uk

## COURSE CONTENT:

This creative and thought-provoking A level gives you the practical skills and theoretical knowledge to succeed in the fashion and creative industries. This course is suited to you if you are interested in fashion and its influence on society. You will experiment with a wide range of fabrics and techniques before refining your ideas for the final assessed pieces in the second year.

## RESULTS 2019

A\*-B 50% | A\*-C 75% | A\*-E 100%



TEACHERS ARE VERY HELPFUL AND GIVE LOADS OF SUPPORT AND YOU ARE ABLE TO USE FACILITIES WHEN NEEDED WITHOUT BEING DISTURBED.

Student Exit Survey

## EXAMS:

40% externally set

60% through a project with the brief chosen by students

**EXAM BOARD:** AQA

## CAREER OPPORTUNITIES:

Art Foundation Course

Costume Design for TV and Film

Fashion Buying and marketing

Set design and the film industry

Fashion Journalism

Apprenticeships in Retail and fashion

Merchandising

Fashion design

Engineering

Illustration and publishing

Store management and fashion styling

## TRIPS, INDUSTRY LINKS AND WORK EXPERIENCE:

Fashion and Textile Museum

V&A Museum

Design Museum

Students are encouraged to build links with live clients & businesses

## ENTRY REQUIREMENTS:

Sixth Form entry criteria plus

**Minimum GCSE grade 4 in a design related subject such as Resistant Materials, Graphic Design, Product Design, Fine Art, Textiles, Photography, or Technical Award is ideal. However, if you are enthusiastic about the creative aspects of this course and have not studied Art or D&T subjects we would still be keen to hear from you.**

## STUDENT PROFILE:



Li Yang

Previous school Farmor's,

Studied Textiles, Biology, Chemistry and EPQ

Achieved BBCC and is studying Biomedical Sciences at Southampton University



# DRAMA & THEATRE

## STAFF CONTACT:

Mr Thomas Newman:  
tnewman@farmors.gloucs.sch.uk

## COURSE CONTENT:

On this course, you will see many live drama productions in a wide variety of theatrical styles. This will help inform your own practical creativity in the productions you devise and perform. You will also research the relationship between theory and practice and gain many invaluable skills in understanding how meaning is communicated to an audience through choices of form, style and convention.

## RESULTS 2019

A\*-B 19% | A\*-C 63% | A\*-E 100%



ONE OF THE THINGS THE SIXTH FORM DOES WELL IS THE AVAILABILITY OF TEACHERS TO TALK ABOUT ACADEMIC AND NON-ACADEMIC RELATED SUBJECTS WHEN I NEED IT.

Student Exit Survey

## EXAMS:

40% exam at the end of Y13

Practical exams in performing an extract and also in devising theatre make up 60% and are supported by written notebooks and reflective reports.

## EXAM BOARD:

AQA

## CAREER OPPORTUNITIES:

Students of Drama and Theatre develop skills that are not just essential for drama but applicable to a wide range of higher education subjects and in the workplace. Whatever the future holds, students of A-level Drama and Theatre emerge with a toolkit of transferable skills preparing them for their next steps.

Careers include:

Teaching

Law

Business Leadership & Management

Politics

Media Studies

Directing

Acting

Set Design

Costume & Fashion Design

Puppet-Making

Playwriting

Community Theatre & Education

Outreach

Lighting & Sound Design or installation

Theatre-making

Dance

## TRIPS, INDUSTRY LINK AND WORK EXPERIENCE

Drama schools and courses.

Drama workshops

National Theatre summer schools

National Theatre,

RSC

Regional theatres from Oxford to Cardiff and Bristol to Birmingham.

Frantic Assembly

Kneehigh

Headlong

Les Enfants Terribles.

NT Live

Digital Theatre

## STUDENT PROFILE:



Alfie Brown

Studying Drama, English Literature, Geography and EPQ

Ambition to study Journalism at University

## ENTRY REQUIREMENTS:

Sixth Form entry criteria plus

**A minimum of a 4 grade in GCSE Drama if studied or grade 4 in English**

# ECONOMICS

## STAFF CONTACT:

Mr Peter Imeson:

pimeson@farmors.gloucs.sch.uk

## COURSE CONTENT:

The skills and knowledge developed when studying A-level Economics will be useful in a variety of careers and degree courses. Students are taught to think critically about a variety of economic issues, to develop the ability to write analytically, to use economic data to support arguments and to communicate clearly.

## RESULTS 2019

A\*-B 55% | A\*-C 100%



I WOULD LIKE TO THANK THE SCHOOL AND SIXTH FORM FOR THE EDUCATION EXPERIENCE THEY HAVE GIVEN MY DAUGHTER AND FOR THE BUSINESS AND ECONOMICS TEACHERS WHO HAVE GIVEN EXTRA SUPPORT AND ENCOURAGEMENT IN ADVANCE OF THE A LEVELS BEING SAT.

Parental Exit Survey

## EXAMS:

There are 3 exams at the end of Y13

**EXAM BOARD:** Edexcel

## CAREER OPPORTUNITIES:

- Banking
- Accounting
- Management
- Economics Degree
- Business & Finance Degree
- Apprenticeships such as St James' Place
- Sponsored degrees such as KPMG

## TRIPS, INDUSTRY LINKS AND WORK EXPERIENCE:

- Business competitions
- Guest speakers
- Young Enterprise enrichment

## STUDENT PROFILE:



**Alex Eaglestone**

Previous School Farmor's

Studied Economics, Geography, Maths and Further Maths AS

Achieved AA\*AB and is studying Geography at Loughborough

## ENTRY REQUIREMENTS:

Sixth Form entry criteria plus  
Minimum GCSE grade 5 in English  
and Mathematics





# ENGLISH

## LANGUAGE AND LITERATURE

### STAFF CONTACT:

Ms Sue Simmonds:  
ssimmonds@farmors.gloucs.sch.uk

### COURSE CONTENT:

You will study a selection of fiction and non-fiction from an anthology as well as two prose texts and a modern play with an option to study poetry as well. A 3000-word coursework essay in Y13 makes up 20% of the final grade. This comprises original writing and a commentary on your creative process. You will work independently on this with tutorial support from staff.

### RESULTS 2019

A\*-B 52% | A\*-C 91% | A\*-E 100%



ENGLISH IS BY FAR MY FAVOURITE SUBJECT. ALL THE FEEDBACK I HAVE HAD HAS ENABLED ME TO IMPROVE MY STUDIES AND I HAVE ALWAYS BEEN ABLE TO RELY ON THE TEACHING TO MAXIMISE MY POTENTIAL.

Student Exit Survey

### EXAMS:

2 exams at the end of Y13 making up 80% of the final grade.

**EXAM BOARD:** Edexcel

### CAREER OPPORTUNITIES:

English Language & Literature is regarded as a facilitating subject and is welcomed by universities for almost any degree course.

Law Degree

English degree

Linguistics degree

Journalism

Education degree

Publishing

Creative writing

Apprenticeships in journalism, marketing, publishing

### TRIPS, INDUSTRY LINKS AND WORK EXPERIENCE:

Creative Writing Club (A level students work with lower school students on their creative writing)

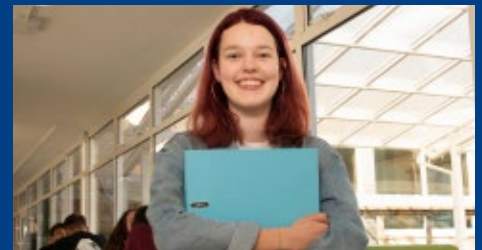
Theatre trips to see plays.

Swindon Poetry festival

Cheltenham Literature Festival

Lectures

### STUDENT PROFILE:



**Hanna Doherty**

Previous school Farmor's

Studying English Language and Literature, Fine Art and French

Ambition to study Modern and Medieval Languages at Cambridge

### ENTRY REQUIREMENTS:

Sixth Form entry criteria plus

**Minimum GCSE grade 5 in English Literature and Language**



# ENGLISH LITERATURE

## STAFF CONTACT:

Ms Sue Simmonds:  
ssimmonds@farmors.gloucs.sch.uk

## COURSE CONTENT:

You will study two novels linked by a theme, one Shakespeare play and one modern play, a selection of modern poetry and poetry from a specific period. A 3000-word coursework essay makes up 20% of the final grade. This is a comparative essay and you can choose any two texts of your choice. You will work independently on this with tutorial support from staff.

## RESULTS 2019

A\*-B 56% | A\*-C 78% | A\*-E 100%



ONE OF THE STRONGEST DEPARTMENTS AND EVEN THE MOST DIFFICULT ESSAYS ARE BROKEN DOWN AND EXPLAINED. THEY HAVE ALLOWED MY CONFIDENCE IN ESSAY WRITING TO GROW AND BOTH TEACHERS ARE ALWAYS APPROACHABLE AND NO TASK IS EVER TOO MUCH FOR THEM.

Student Exit Survey

## EXAMS:

Three exams at the end of Y13 making up 80% of the final grade.

**EXAM BOARD:** Edexcel

## CAREER OPPORTUNITIES:

English Literature is regarded as a facilitating subject and is welcomed by universities for almost any degree course.

Law Degree

English degree

Linguistics degree

Journalism

Education degree

Publishing

Creative writing

Apprenticeships in journalism, marketing, publishing

## TRIPS INDUSTRY LINKS AND WORK EXPERIENCE:

Creative writing Club (A level students work with younger students to develop their creative writing.)

Theatre trips to see plays

Swindon Poetry festival

Cheltenham Literature Festival

Lectures

## STUDENT PROFILE:



**Charlotte Gleeson**

Previous school Farmor's

Studied English Literature, French, Psychology and EPQ

Achieved A\*A\*A\*A\* and is studying Modern and Medieval Languages at Cambridge

## ENTRY REQUIREMENTS:

Sixth Form entry criteria plus

**Minimum GCSE grade 5 in English Literature and Language**



# EXTENDED PROJECT QUALIFICATION

## STAFF CONTACT:

Dr R Dolton:

rdolton@farmors.gloucs.sch.uk

## COURSE CONTENT:

This is an independent research project in an area of your own interest. You are taught skills including academic research and referencing, presentation, decision-making and project management. A supervisor supports you with individual tutorials to progress your project. You will produce an artefact and report or a research essay of approximately 5000 words. Your production log records each stage of your journey.

## RESULTS 2019

A\*-A: 55% | A\*-B 84% | A\*-E 100%



EXCELLENT 6TH FORM WHERE MY CHILD HAS BEEN ENCOURAGED TO GROW AND BECOME A FAR MORE INDEPENDENT LEARNER. WE HAVE SEEN HUGE PROGRESS DURING SIXTH FORM AND WE WOULDN'T HAVE WANTED HER TO GO ANYWHERE ELSE.

Parental Exit Survey

## EXAMS:

100% assessed through production log and essay / report and artefact. There is no exam.

## EXAM BOARD: AQA

## CAREER OPPORTUNITIES:

EPQ is highly regarded by universities and employers because of the skills needed to be successful.

Many universities lower their entry requirements if students have an A in their EPQ.

EPQ is an opportunity to demonstrate an interest in a potential career path for which there is no A level, such as nursing, midwifery, law, politics, archaeology. This sets students apart.

## TRIPS, INDUSTRY LINKS AND WORK EXPERIENCE:

There are strong links with Southampton University which delivers lectures.

You are strongly encouraged and supported in any extra-curricular activities which contribute to the project.

You are encouraged to pursue your field of interest beyond the school.

## STUDENT PROFILE:



Toby Jack

Previous school Farmor's

Studied EPQ, Physics, Maths and Further Maths

Achieved A\*A\*A\*A\* and is studying Mechanical Engineering at Bristol University

## ENTRY REQUIREMENTS:

Sixth Form entry criteria



# LEVEL 3 APPLIED CERTIFICATE IN FOOD SCIENCE & NUTRITION

## STAFF CONTACT:

Mrs Tharshini Jayakanthan:  
tjayakanthan@farmors.gloucs.sch.uk

## COURSE CONTENT:

You will study how to meet the nutritional needs of specific groups. This will include exploring the properties of nutrients and how food production impacts on ingredients. It is also a strongly practical course including designing menus, meals and dishes as well as dietary plans for specific groups and preparing them. Complex cooking skills are also part of the course.

## NEW COURSE FOR 2019



THE STAFF ARE VERY SUPPORTIVE AND GIVE MANY OPPORTUNITIES. THERE ARE MANY SPACES TO EITHER STUDY OR RELAX.

Student Exit Survey

## EXAMS:

50% Internal Assessment

50% External Exam

Graded at Pass, Merit or Distinction

EXAM BOARD: WJEC

## CAREER OPPORTUNITIES:

This course supports progression into the fields of Health and Social care, Sport, understanding nutrition, government agencies and the public service sector. It is recognised by UCAS and so progression onto university courses is also open to you:

Degree in Health and Social Care

Degree in Nutrition

Degree in Public Health Nutrition

Degree in Food Science and Technology

Social Services

Catering Industry

Hospitality Industry

## TRIPS, INDUSTRY LINKS AND WORK EXPERIENCE:

Links with restaurants in Cheltenham for visits and visitors

Works experience at various restaurants is available

Links with Swindon College

## ENTRY REQUIREMENTS:

Sixth Form entry criteria



# FRENCH

## STAFF CONTACT:

Mme Louisa Amoah:

lamoah@farmors.gloucs.sch.uk

## COURSE CONTENT:

You will study current issues and trends in society as well as the cultural topics of religion, history, literature, art and film. You will also have half an hour per week of one-to-one speaking sessions to develop spoken French. This is a wonderful opportunity for you to immerse yourself in the language and culture of France and therefore gain a skill for life.

## RESULTS 2019

A\*-B 67% | A%-C 100%



THE SMALL SIXTH FORM CLASS SIZES THAT YOU HAVE BEEN ABLE TO OFFER REALLY DO MAKE A DIFFERENCE TO THE STUDENTS' ENTHUSIASM AND OUTLOOK AND WE WOULD RECOMMEND THE SCHOOL WHOLEHEARTEDLY. THANK YOU.

Parental Exit Survey

## EXAMS:

Listening, Reading & Writing 50%

Writing on film and literature 20%

Speaking on current trends in society 30%

## EXAM BOARD: AQA

## CAREER OPPORTUNITIES:

French is regarded as a facilitating subject and is welcomed by universities for almost any degree course.

Degree courses in languages, including Italian, Japanese and languages not yet studied.

Linguistics degrees

TEFL courses

Studying abroad

Degrees in any subject with a year abroad option.

Legal secretary

Translation services

## TRIPS, INDUSTRY LINKS AND WORK EXPERIENCE:

Exchange trips

French newspaper available in the LRC

Exchange trips and cultural trips

## STUDENT PROFILE:



**Molly Davis**

Previous school Farmor's

Studied Biology, French, Chemistry and EPQ

Achieved A\*ABA and is studying Medicine at Cardiff University

## ENTRY REQUIREMENTS:

**Sixth Form entry criteria plus**

**Minimum GCSE grade 6 in French**



# GEOGRAPHY

## STAFF CONTACT:

Mrs Caroline McLarty:  
cmclarty@farmors.gloucs.sch.uk

## COURSE CONTENT:

Geography will inspire you to learn more about the world around you. The course is topical and will develop your perceptions and stimulate your investigative and analytical skills. Course content includes both Physical and Human Geography. Physical Geography covers water and carbon cycles as well as coastal landscapes. Human Geography covers global systems and governance as well as populations and the environment.

## RESULTS 2019

A\*-B 56% | A\*-C 81% | A\*-E 100%



ONE OF THE THINGS THE SIXTH FORM DOES WELL IS TO MAKE SURE THAT YOU ARE ON TOP OF YOUR WORK AND TRACK YOUR PROGRESS WELL TO ENSURE YOU HAVE THE BEST POSSIBLE OUTCOME FOR GRADES.

Student Exit Survey

## EXAMS:

There are two equally weighted exams at the end of Y13 as well as a piece of coursework that makes up 20% of the final grade. This coursework is a 3000 to 4000-word individual investigation.

## EXAM BOARD: AQA

## CAREER OPPORTUNITIES:

Geography is regarded as a facilitating subject and is welcomed by universities for almost any degree course.

Degrees in Geography

Degrees in Planning and Urban development

Degrees in Anthropology

Degrees in Oceanography

Degrees in Environment Studies

Degrees in Teaching

Estate Management

## TRIPS, INDUSTRY LINKS AND WORK EXPERIENCE:

A residential trip to South Wales to investigate coastal landforms and urban developments. A trip to Bristol to study urbanisation first hand. Local trips including primary data collection of the hydrology of the River Coln. An international field trip is often offered to enhance your geographical understanding on a number of topics.

## ENTRY REQUIREMENTS:

Sixth Form entry criteria plus

Minimum grade 4 in GCSE Geography if taken

## STUDENT PROFILE:



**Eleanor Middleton**

Previous school Farmor's

Studied ADG, Geography, Maths and EPQ

Achieved A\*BA\*A\* and is studying Architecture at UCL.



# HISTORY

## STAFF CONTACT:

Mr Jim Speake: [jspeake@farmors.gloucs.sch.uk](mailto:jspeake@farmors.gloucs.sch.uk)

## COURSE CONTENT:

You will study the Soviet Experiment and look at the controversies about why it collapsed. You will also study the division of Germany after WWII through to reunification from an East German perspective. In Y13 you will study the British empire 1763-1914 including the American Revolution, early Australian history, the abolition of slavery, the Indian Rebellion and much more. You will also have the opportunity to do an historical enquiry which is a 4000 word essay on an historical controversy of your choice.

## RESULTS 2019

A\*-B: 37% | A\*-C 89% | A\*-E 100%



THE LRC IS THE MOST USEFUL SPACE AND WITHOUT IT I WOULDN'T GET HALF AS MUCH WORK DONE AS I DO.

Student Exit Survey

## EXAMS:

3 Exams at the end of Y13 which make up 80% of the final grade.

The Historical Enquiry makes up 20% of the final grade.

**EXAM BOARD:** Edexcel

## CAREER OPPORTUNITIES:

History is regarded as a facilitating subject and is welcomed by universities for almost any degree course.

Law degree

Politics degree

PPE degree

Journalism

International studies

Many politicians have History degrees

## TRIPS, INDUSTRY LINKS AND WORK EXPERIENCE:

Russia and East Berlin

## STUDENT PROFILE:



**Edward Conlan**

Previous school Farmor's

Studied History, English Literature, Psychology and EPQ

Achieved AABA and is studying Law at Bristol University

## ENTRY REQUIREMENTS:

Sixth Form entry criteria plus

**Minimum GCSE grade 4 in History if taken**

**Minimum GCSE Grade 5 in English Language**



# MATHEMATICS

## CORE MATHEMATICS

### STAFF CONTACT:

Mrs Alison Lines: [alines@farmors.gloucs.sch.uk](mailto:alines@farmors.gloucs.sch.uk)

### COURSE CONTENT:

Core Maths is a new course designed for post-16 students who want to continue studying maths. It will help you retain, deepen and extend your maths to be better prepared for higher education and employment. You will apply clear, mathematical reasoning to real-life problems, analyse and interpret data in various contexts and confidently deal with everyday financial maths. Core Maths is very different to GCSE maths.

### RESULTS 2019

A\*-B: 83% | A\*-C 100%



WE ARE VERY PLEASED THAT OUR SON HAS SETTLED SO WELL IN SIXTH FORM AND THAT WE HAVE YOU TO HELP SUPPORT HIM

Parent email

### EXAMS:

There are 2 exam papers at the end of the 2 year course. This leads to a level 3 qualification, which carries the same UCAS points as an AS Level.

### EXAM BOARD: OCR

### CAREER OPPORTUNITIES:

This course will improve your career prospects in many ways as taking maths after GCSE is highly desirable and this course will set you apart. These practical mathematical skills will help you in particular with sciences, geography, business studies, psychology, and economics.

### TRIPS, INDUSTRY LINKS AND WORK EXPERIENCE:

The Meteorological Office showing how maths is used in weather forecasting.

Escape room team building trip

### STUDENT PROFILE:



#### Charlotte Blakeley

Studying Core Maths, Psychology, Fine Art and English Literature

Ambition to study English Literature at University

50% OF OUR STUDENTS TAKE A MATHS COURSE POST 16

### ENTRY REQUIREMENTS:

Sixth Form entry criteria plus

**A grade 4 at GCSE Mathematics**





# MATHEMATICS

## STAFF CONTACT:

Mr Graeme Spurr: [gspurr@farmors.gloucs.sch.uk](mailto:gspurr@farmors.gloucs.sch.uk)

## COURSE CONTENT:

You will study pure maths including extensive use of algebra, calculus and trigonometry as well as applied maths including statistics and mechanics focusing on how maths can be used to model the real world in order to solve problems. Mechanics overlaps strongly with Physics A-level whereas Statistics deals with probability, sampling data and statistical hypotheses which overlap with Geography, Psychology and Biology.

## RESULTS 2019

**A\*-B 70% | A\*-C 91% | A\*-E 100%**



I'D ALSO LIKE TO SAY HOW IMPRESSED WE HAVE BEEN WITH THE SIXTH FORM. I THINK OUR SON WILL LOOK BACK ON HIS TIME AT FARMOR'S WITH GREAT FONDNESS – HE HAS HAD A GREAT EXPERIENCE AND BEEN VERY HAPPY.

Parent email

## EXAMS:

The final examinations consist of 3 two hour papers.

Paper 1 – Pure Maths marked out of 100.

Paper 2 – Pure Maths marked out of 100.

Paper 3 – Applied Maths including Mechanics and Statistics also marked out of 100.

**EXAM BOARD:** Edexcel

## CAREER OPPORTUNITIES:

In an increasingly numerical world A-level maths is useful in a large number of degree courses and careers. It is a subject that is highly valued both by universities, as a facilitating subject, and employers for the problem solving skills it develops.

It is essential for further study of  
Mathematics  
Statistics  
Engineering  
Physics

## It is desirable for:

Other physical sciences  
Computing  
Architecture  
Computer animation  
Psychology and other social sciences  
Actuary  
Meteorology  
Economics  
Accounting

And numerous other careers rely on a good understanding of number.

## TRIPS, INDUSTRY LINKS AND WORK EXPERIENCE:

Previous students have completed work experience with a number of financial and engineering firms. The department is developing links with the local STEM (Science, Technology, Engineering and Mathematics) network which can arrange gap year placements with STEM firms.

## STUDENT PROFILE:



**Charlotte Pearce**

Previous school Farmor's  
Studied Maths, Chemistry, Geography and EPQ  
Achieved A\*A\*A\*A and is studying Pharmacy at Cardiff University

## ENTRY REQUIREMENTS:

Sixth Form entry criteria plus

**Minimum grade 7 in GCSE Mathematics**

# FURTHER MATHEMATICS

## STAFF CONTACT:

Mr Graeme Spurr: [gspurr@farmors.gloucs.sch.uk](mailto:gspurr@farmors.gloucs.sch.uk)

## COURSE CONTENT:

You will choose Further Maths because of a real enthusiasm for maths, and an aspiration to further study in maths, engineering, the sciences and economics. You will explore complex numbers and matrices, as well as building your understanding and knowledge of sophisticated mathematical ideas and techniques. You can choose options to specialise in areas that are particularly relevant to your interests and aspirations.

## RESULTS 2019

A\*-B 67% | A\*-C 100%



FURTHER MATHEMATICS IS PARTICULARLY USEFUL PREPARATION FOR COURSES IN THEORETICAL AND/OR MATHEMATICAL PHYSICS, WHICH HAVE A MORE SOPHISTICATED MATHEMATICAL CONTENT.

## EXAMS:

The final examinations consist of 4 one and half hour papers. The first two papers are compulsory while paper 3 and 4 allow for a number of options.

Paper 1 – Pure Maths marked out of 100.

Paper 2 – Pure Maths marked out of 100.

Paper 3 & 4 – More pure and applied maths options including Decision, Mechanics and Statistics also marked out of 100.

**EXAM BOARD:** Edexcel

## CAREER OPPORTUNITIES:

The students who choose to study Further Mathematics are more commonly the students who go on to study Mathematics, Physics or Engineering at one of the Russell Group universities. Careers where Further Maths is highly desirable are those involved with mathematics at a high level.

## These include:

- Statisticians
- Engineers
- Computer scientists
- Physicists
- Economists
- Actuary

## TRIPS, INDUSTRY LINKS AND WORK EXPERIENCE:

Previous students have completed work experience with a number of financial and engineering firms. The department is developing links with the local STEM (Science, Technology, Engineering and Mathematics) network which can arrange gap year placements with STEM firms.

There will also be the opportunity to compete in a number of mathematical competitions.

## ENTRY REQUIREMENTS:

Sixth Form entry criteria plus  
**Minimum GCSE grade 8 in Mathematics**

## STUDENT PROFILE:



**Lydia Nuttall**

Previous School Farmor's

Studied Further Mathematics, Mathematics, and Physics

Achieved ABC and is studying Architecture, Urbanism and Building Sciences at Eindhoven University of Technology, Netherlands

*"Physics and mathematics are essential requirements for entry to a physics degree. Good supplementary subjects include another science, such as chemistry or geology, and further mathematics, either to AS or A-level."*

Professor Peter Main, Director,  
Ed. and Science: Institute of Physics

# MEDIA

## STAFF CONTACT:

Ms Emma Cieciora:  
ecieciora@farmors.gloucs.sch.uk

## COURSE CONTENT:

You will study media in all its forms including TV programmes, music videos, video games, advertising, marketing, film making, newspapers, radio, magazines, the film industry and online media including blogs. You will also study the theory of media that will allow you to both analyse these forms of media and develop the skills to produce your own pieces.

## RESULTS 2019

A\*-B 61% | A\*-C 72% | A\*-E 100%



MEDIA AT THIS SCHOOL IS VERY WELL TAUGHT AND I FEEL CONFIDENT IN IT, THE FEEDBACK IS DETAILED AND YOU ARE CLEARLY TOLD HOW TO IMPROVE. THE COURSEWORK IS VERY STRONG IN HOW IT IS TAUGHT, IT'S CLEAR AND PRECISE.

Student Exit Survey

## EXAMS:

There are two exams at the end of Y13 as well as a piece of coursework for which you produce your own piece of media. This is worth 30% of the final grade.

**EXAM BOARD:** WJEC

## CAREER OPPORTUNITIES:

Advertising  
Journalism  
Television / Film producing

## TRIPS, INDUSTRY LINKS AND WORK EXPERIENCE:

Pamela Armstrong  
Speakers' Programme  
BBC

## STUDENT PROFILE:



### Harry Palmer

Previous School Farmor's.

Studied Media, Psychology, Business Studies, Economics (AS) and EPQ

Achieved ABCBA and is studying Communication, Media and Culture at Oxford Brookes University

## ENTRY REQUIREMENTS:

Sixth Form entry criteria plus

**GCSE grade 5 in Media if taken**

**GCSE grade 4 or above in English Language**



# MUSIC

## STAFF CONTACT:

**Louise Matley:** lmatley@farmors.gloucs.sch.uk

## COURSE CONTENT:

The AQA Music A Level is a relevant and contemporary qualification that offers you the chance to study a wide range of musical genres. It brings listening, performance and composition to life in new and engaging ways, and links to the world around us.

We know that every student has different learning styles and musical tastes, which is why our course values all music styles, skills and instruments. You will be able to broaden your mind and foster your love of all music with a qualification that you will enjoy no matter what your ability or background is.

## NEW COURSE FOR 2018



OUR DAUGHTER GRADUATES AS A WELL-ROUNDED, EDUCATED, SELF-RELIANT, COMPOSED AND CONFIDENT YOUNG LADY. SIXTH FORM TUTORS HAVE DONE THEIR JOB AND MADE HER READY AND WELL-EQUIPPED FOR THE NEXT CHAPTER OF HER LIFE.

Parent email

## EXAMS:

1. Appraising music 40%
2. Performance 35% (Minimum of 10 minutes of recorded performance)
3. Composition 25% (Minimum of 4.5 minutes)

## EXAM BOARD: AQA

## CAREER OPPORTUNITIES:

There are a huge variety of potential careers available from studying this course. The Music industry is one of the biggest contributors to the UK economy. Music is constantly evolving, inspiring creativity and expression in a way that no other subject can and is designed to develop a broad range of skills including project management, appraising and analysis, creativity and imagination. Students will be able to progress to undergraduate study in Music Performance, Popular Music Composition, Film and TV Sound and Production, Sound Engineering and many other courses requiring a similar skill set.

The subject can enhance a lifetime

hobby as well as lead to a career in recording, sound engineering, composing for film and media, performing, teaching, radio or television work and studio work.

## TRIPS, INDUSTRY LINKS AND WORK EXPERIENCE:

Trip to a West End Musical.

Opportunity to perform in Sixth form concerts and take part in extra curricular groups such as Staff and Sixth Form choir; Orchestra and Jazz band.

Also the chance to learn a musical instrument and have lessons in school.

## ENTRY REQUIREMENTS:

Sixth Form entry criteria plus

**The ability to play an instrument is a significant advantage**

## STUDENT PROFILE:



**Charlotte Staynings**

Previous school Kingshill

Studying Music, Psychology and English Language and Literature

Ambition to study Music at University



# PHYSICAL EDUCATION

## STAFF CONTACT:

Mrs Dawn Johnson:  
djohnson@farmors.gloucs.sch.uk

## COURSE CONTENT:

The course covers factors that affect performance in sport and activity as well as considering factors that affect optimal performance.

## RESULTS 2018

A\*-B 25% | A\*-C 75% | A\*-E 100%

No entrants 2019



IT IS AMAZING HOW FARMOR'S STAFF HAVE MANAGED TO ENCOURAGE SUCH A POSITIVE LEARNING ETHIC AND YET MAINTAIN THE SENSE OF HAVING FUN, FRIENDSHIP, SUPPORT AS WELL AS PROVIDING THEM WITH SO MUCH DIVERSE ENRICHMENT.

Parent email

## EXAMS:

2 exam papers in Y13 plus a practical assessment making up 30% final grade.

The practical assessment comprises film evidence of performing at a competitive level and a written analysis linking to theory topics. This requires a current and serious commitment to one sport.

## EXAM BOARD: AQA

## CAREER OPPORTUNITIES:

Sport and fitness is a huge industry. From pushing the boundaries of performance in elite sport through to amateur teams and individuals who need activity to maintain health, sport and fitness is a fast growing business. Physical Education has never played such an important part in society. It takes a multi-disciplinary approach, including social, physiological, biomechanical and psychological insights into understanding human performances and as such requires a broad range of academic skills. A level PE is regarded as an A level Science subject when applying to courses in different fields of study. PE students are

fit and healthy, good communicators and leaders, team players with good social skills. They have the ability to analyse, evaluate and self-reflect. These are qualities sought after by future employers.

A level PE/ Btec Sports and Exercise Science could lead you towards numerous university courses including

- Sports studies
- Sports science
- Teacher training
- Leisure studies
- Sports management
- Events management
- Strength and conditioning
- Exercise and health
- Nutrition
- Sports rehabilitation
- Physiotherapy

## TRIPS INDUSTRY LINKS AND WORK EXPERIENCE:

Competitive sports competitions  
Sports tours have included Barcelona, Ireland, Italy, Barbados and various UK venues.

## STUDENT PROFILE:



Sasha Gibbs

Previous School Farmor's  
Studied PE, Maths, Biology

Achieved AAB and is studying Sports Science at Bath University

## ENTRY REQUIREMENTS:

Sixth Form entry criteria plus

**Minimum Grade 4 at GCSE PE if studied**  
**Participation in a sport at club level with regular training outside school**

**Grade 4 in a GCSE science is essential**

# PHYSICS

## STAFF CONTACT:

Mr Dave Tatlow: [dtatlow@farmors.gloucs.sch.uk](mailto:dtatlow@farmors.gloucs.sch.uk)

## COURSE CONTENT:

You will study core content including: measurements and their errors, particles and radiation, waves, mechanics and materials, electricity, thermal physics, fields and their consequences, nuclear physics and medical physics.

## RESULTS 2019

A\*-B: 45% | A\*-C 73% | A\*-E 100%



FARMOR'S IS NOT JUST AN ACADEMY, IT IS A FAMILY THAT INSPIRES, SUPPORTS, ENABLES AND PROVIDES NOT JUST LEARNING BUT CULTURES THE LIFE SKILLS THAT THESE CHILDREN WILL TAKE WITH THEM AND USE FOR THE REST OF THEIR LIFE.

Parent email

## EXAMS:

3 exams at the end of Y13 plus a practical assessment course which leads to an endorsement qualification.

## EXAM BOARD: AQA

## CAREER OPPORTUNITIES:

Potential careers available from this course

Architecture degree

Engineering degree or apprenticeships

Medical degree (most medical courses require Chemistry and another science)

Mechanical Engineering

Astro-physics degree

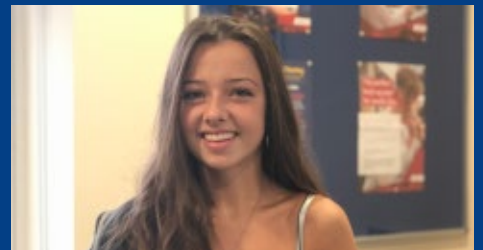
## TRIPS, INDUSTRY LINKS AND WORK EXPERIENCE:

Honda Car Plant

Intel Microchip processor plant

Annual trip to CERN in Geneva to explore the Hadron Collider and associated scientific museums and research facilities.

## STUDENT PROFILE:



**Christina Elliott**

Previous school Farmor's

Studied Physics, Maths, Further Maths and EPQ

Achieved A\*A\*AA and is studying Actuarial Science and Mathematics at Manchester University

## ENTRY REQUIREMENTS:

Sixth Form entry criteria plus

**Grades 56 in double science or 556 in triple (6 in Physics) and grade 6 in maths. If grade 5 achieved in maths you should also take the core maths option.**



# PSYCHOLOGY

## STAFF CONTACT:

Mr Jeremy Johnson: [jjohnson@farmors.gloucs.sch.uk](mailto:jjohnson@farmors.gloucs.sch.uk)

## COURSE CONTENT:

Psychology is a fascinating and incredibly popular area of study. It will help you understand human behaviour and mental processes and allow you to better understand how we think, act and feel. Why do people act the way they do? What shapes our personality? How do we learn and change throughout our life? Psychology develops valuable skills such as analysis of evidence, reasoning and evaluation.

## RESULTS 2019

A\*-B 57% | A\*-C 86% | A\*-E 96%



SIXTH FORM TEACHERS MAKE YOU FEEL COMFORTABLE WITH YOUR LEARNING AND WELL ORGANISED SO YOU KNOW WHAT YOU NEED TO DO IN ORDER TO KEEP ON TRACK WITH WORK.

Student exit survey

## EXAMS:

3 exams all of 2 hour duration at the end of Y13.

**EXAM BOARD:** AQA

## CAREER OPPORTUNITIES:

Professional Psychology e.g. Clinical, Forensic, Occupational

Advertising & Marketing

Social Work

Teaching

Nursing

Counselling

## TRIPS, INDUSTRY LINKS AND WORK EXPERIENCE:

Exam Preparation courses

Phillip Zimbardo Conference

Social Sciences Conference

## STUDENT PROFILE:



**Ellie Barnes**

Previous school Farmor's

Studied Psychology, Biology and Chemistry

Achieved A\*A\*A and is planning to study Medicine

## ENTRY REQUIREMENTS:

Sixth Form entry criteria plus

**If Maths GCSE grade is below 6 then Core Maths must be taken as well**



# SOCIOLOGY

## STAFF CONTACT:

Mr Andrew Wright: [awright@farmors.gloucs.sch.uk](mailto:awright@farmors.gloucs.sch.uk)

## COURSE CONTENT:

You will study many different aspects of society and acquire critical understanding of the sociological research methods to evaluate them. Areas of study include poverty and wealth amongst different social groups, welfare provision and the importance of work, unemployment and education, global developments like inequality, globalisation and population growth as well as crime and deviance, considering the different social, psychological and cultural influences.

## RESULTS 2019

A\*-B 11% | A\*-C 44% | A\*-E 100%



SIXTH FORM HAS BEEN FANTASTIC FOR MY DAUGHTER. SHE HAS BEEN ENCOURAGED TO MATURE AND BE A FAR MORE INDEPENDENT LEARNER AND WE CAN'T BELIEVE THE IMPROVEMENT SHE HAS MADE.

Parental Exit Survey

## EXAMS:

Three exams at the end of Y13

**EXAM BOARD:** AQA

## CAREER OPPORTUNITIES:

The most obvious career directions are Nursing, Social Work and Teaching. However, students also go on to become lawyers, managers, journalists and police officers. It is a very useful course for developing your understanding of society and facilitates entry onto many university courses.

## TRIPS, INDUSTRY LINKS AND WORK EXPERIENCE:

A range of speakers in the speakers' programme.

Social Sciences Conference

## STUDENT PROFILE:



Izzy Keates

Previous school Kingshill

Studying Sociology, Psychology and Biology

Ambition to study Criminology at University

## ENTRY REQUIREMENTS:

Sixth Form entry criteria plus

**Minimum grade 4 in GCSE**

**Sociology if studied**





# SPANISH

## STAFF CONTACT:

Mr Simon Pike: spike@farmors.gloucs.sch.uk

## COURSE CONTENT:

You will study current issues and trends in society as well as the cultural topics of religion, history, literature, art and film. You also have half an hour per week of one-to-one speaking sessions to develop spoken Spanish. This is a wonderful opportunity for you to immerse yourself in the language and culture of Spain and therefore gain a skill for life.

## RESULTS 2019

A\*-B 75% | A\*-D 100%



I AM VERY HAPPY WITH THE 6TH FORM, AND BOTH MY CHILDREN HAVE BENEFITED HUGELY FROM THE ENCOURAGEMENT, SUPPORT AND ETHOS.

Parental Exit Survey

## EXAMS:

At the end of Y13

Listening, Reading & Writing 50%

Writing on film and literature 20%

Speaking on current trends in society 30%

EXAM BOARD: AQA

## CAREER OPPORTUNITIES:

Spanish is regarded as a facilitating subject and is welcomed by universities for almost any degree course.

Degree courses in languages, including Italian, Japanese and languages not yet studied.

Linguistics degrees

TEFL courses

Studying abroad

Degrees in any subject with a year abroad option

Legal secretary

Translation services

## TRIPS, INDUSTRY LINKS AND WORK EXPERIENCE:

European exchange trips

Exchange trips and cultural trips

## STUDENT PROFILE:



Annabelle Foley

Previous school Kingshill

Studied Spanish, Psychology and Biology

Achieved BBC and is currently on a gap year before heading to university in 2019

## ENTRY REQUIREMENTS:

Sixth Form entry criteria plus

Minimum GCSE grade 6 in Spanish



# TRIPS & VISITS



Sixth Form students have wide-ranging opportunities for experiences beyond Fairford. Recent destinations have included Iceland, Russia, Vietnam, Cambodia, Ethiopia, Chile, Bolivia, India, France, Spain, New York and Kenya across a range of departments and subject interests. Together with the foreign destinations, visits closer to home include London, Wales, Bristol and Birmingham. Trips this year include New York and Kenya.



# CHOOSING YOUR COURSES

## CORE OFFER

Your study programme will have three A levels at its core. We offer an extensive range of subjects and ask you to choose three of these as the basis of your curriculum.

You may choose these based on career ambitions at university or the workplace. For example, if you want to study Medicine, Chemistry must be one of your choices. If you want to study Law, History or English will be important. If you don't have an ambition at the moment, that is fine. You should choose on the basis of what you enjoy, are good at, or are interested in. You will have many opportunities to discuss your choices and options with experienced sixth form staff during the application process.

## ACADEMIC ENRICHMENT

To your core three A levels, you can then add a further academic course if you wish. These are:

- The Extended Project Qualification
- Core Maths
- An additional A level.

For example, if you choose to study Geography, Psychology, Chemistry, Physics, Economics or Business, Core Maths would be a really useful addition that would complement the maths requirements in those A levels.

If you are studying Maths A level and have achieved a GCSE grade 8 or 9, you might like to add Further Maths, especially if you are thinking of studying Maths at university.

It is important to recognise that no universities require four A levels as a minimum. High achievement at GCSE would indicate suitability for four A levels; however, we believe a more balanced curriculum to be more beneficial for those intending to continue their studies at University level. Oxford and Cambridge universities explicitly prefer students to have three A levels and the EPQ, for example.

## DEPUTY HEAD GIRL AND DEPUTY HEAD BOY



## HEADS OF HOUSE



## STUDENT PRESIDENTS



## FINANCIAL SUPPORT

We have a bursary programme to support students who might have financial barriers to their learning. This includes payments to help with transport costs, with materials and resources, with books. You will all be given the application form and information but please ask if you need help.

## GETTING TO SIXTH FORM

There are lots of buses and many of our students drive in once they have passed their test. There is no charge for this and there is a carpark at the front of the school. Some parents also set up lift-shares. If your household income is below £30,000 you can apply for financial support with bus fares.



Farmor's School  
AN ACADEMY

**SIXTH  
FORM**



INDEPENDENCE & EXCELLENCE

## UK DESTINATIONS



# NEXT STEPS...

Our UCAS system is second to none: 90% of our students gain a place at their first choice university, including Oxford, Cambridge, and medical courses.

Other popular destinations include gap years, apprenticeships, drama schools, art colleges and employment. Whatever your ambition, there is individual support, advice and guidance to help you on your way.

In addition, you will be emailed a weekly careers bulletin with a round-up of all the new opportunities available locally, nationally and globally.

As you can see, our students move on to destinations not only in the UK, but across the world.

## OR ANYWHERE...



The Park, Fairford GL7 4JQ

01285 712302

admin@farmors.gloucs.sch.uk

[www.farmors.gloucs.sch.uk](http://www.farmors.gloucs.sch.uk)