

2022



Farmor's School  
AN ACADEMY

# SIXTH FORM



# SIXTH FORM PROSPECTUS



Welcome to Farmor's School	3
Study programme	4
Trips & visits	5
Student Leadership	6
Global Perspective	7
DofE - Farmor's Walking Club	8
Enrichment	9
Choosing your courses	10
Application Process	11
Art & Design: Fine art	12
Art & Design: Digital photography	13
Biology	14
Business studies	15
Chemistry	16
Computer science	17
Design & Technology: 3D Design	18
Design & Technology: Fashion & Textiles	19
Drama & theatre	20
Economics	21
English Language & Literature	22
English Literature	23
Extended Project Qualification	24
Food science & Nutrition	25
French	26
Geography	27
History	28
Core Mathematics	29
Mathematics	30
Further Mathematics	31
Media	32
Music	33
Physical Education	34
Physics	35
Psychology	36
Sociology	37
Spanish	38
Next steps	39

## The Sixth Form Leadership Team:



**Laura Hubbard-Miles**  
Head of Y12  
lhubbard-miles@farmors.  
gloucs.sch.uk



**Claire Andrews-Alsaigh**  
Head of Y13  
candrews-alsaigh@farmors.  
gloucs.sch.uk



**Clare Orgill**  
Sixth Form Pastoral Administrator  
corgill@farmors.gloucs.sch.uk



**Liz Lloyd**  
Careers Coordinator  
llloyd@farmors.gloucs.sch.uk



# Welcome to Farmor's School

**As Head of Farmor's Sixth Form, I'd like to offer you a warm welcome and give you a brief insight into why I believe it is such a fantastic place to study.**

**EXCELLENCE** "Their concept is so unique and brilliant, I feel like the school really puts the students first" *Student 2019*.

**OUTSTANDING** purpose-built facilities complement the quality of A level teaching that you will enjoy. Our staff regularly 'go the extra mile' with one-to-one tutorials and mentoring to ensure students reach their potential.

**PERSONALISED** advice, guidance and pastoral support is available to all students. This unrivalled support includes the Aspire Programme for Oxbridge and Medicine students and we are successful in supporting students onto these paths every year.

**INDEPENDENCE** is vitally important as you prepare for the next steps of your life after A levels. Therefore, we will treat you as an adult from day one, responsible for your choices from how you dress to the targets you set yourself.

We have a unique balance of freedom and academic rigour, of independence and support, of routine and choice. This, coupled with the breadth of our offer of both A levels and Enrichment Programmes, attracts students from many different schools. New entrants make up over 20% of the cohort each year.

But don't just take my word for it. Come and see what we have to offer.



**Emma White**  
Head of Sixth Form  
ewhite@farmors.gloucs.sch.uk





## Study Programme

**As well as your academic courses, you will get the opportunity to participate in a wide range of activities that will give you the skills to stand out from the crowd.**

### How many courses can I choose?

- Four A levels
- Three A levels + EPQ
- Three A levels + Core Maths
- Three A levels

### Enrichment

You will have a range of enrichment programmes to choose from including:

- Duke of Edinburgh Gold,
- Horticulture
- Sports Coaching
- Three Peaks Challenge
- Raspberry Pi
- Social Committee
- Charity Committee
- Music
- Model United Nations
- Creative programme

### Speakers Programme

There is a fortnightly speakers' programme of events from all branches of industry and public life.

These include:

- Alan Rusbridger
- Living and working in war zones
- Mental health awareness
- Canine Partners
- Drive safety
- Healthy relationships
- Guidance on the UCAS process

### Aspire Programme

If you are aspiring to apply to Oxford, Cambridge or for a Medicine course you are welcome to join our Aspire Programme. There is a range of trips and speakers as well as support with the preparation of the application including reading

seminars and tutorials. You will be offered an interview which is filmed for you to keep and review later. This is a highly successful and valued programme tailored to the needs of each individual.

### Additional opportunities

- First aid
- Sports teams
- Student Shadow Leadership Team
- Work experience

### Why choose Farmor's Sixth Form?

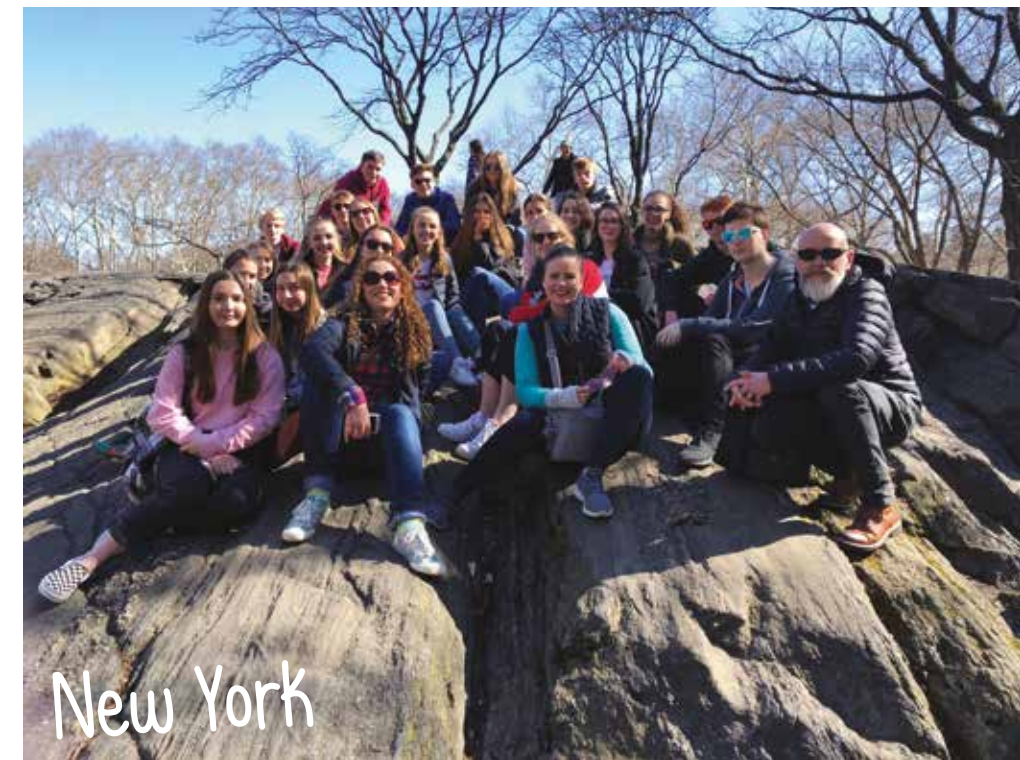
- Personalised teaching with an average class size of eleven, leading to great results.
- Excellent facilities including study areas, social spaces and café.
- Diverse enrichment opportunities including model United Nations, DofE Gold and far moors mountain walkers.
- Flexible and individual support for progression to a wide range of destinations from Oxbridge to apprenticeships.



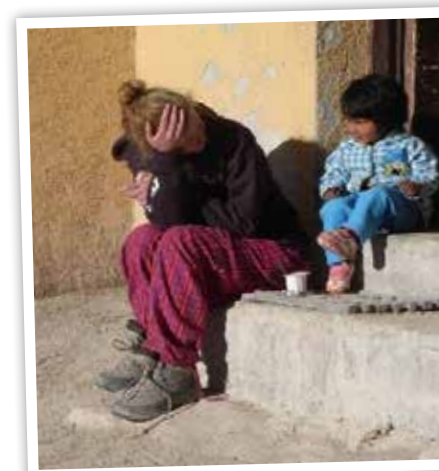
## Trips & visits

**Sixth Form students have wide-ranging opportunities for experiences beyond Fairford.**

Recent destinations have included Iceland, Russia, Vietnam, Cambodia, Ethiopia, Chile, Bolivia, India, France, Spain, New York and Kenya across a range of departments and subject interests. Together with the foreign destinations, visits closer to home include London, Wales, Bristol and Birmingham. We are also linked with an exciting educational project in Zambia.



New York



Three Peaks





## Student Leadership

**Leadership opportunities abound at Farmor's. We offer students the challenge of applying for our Student Leadership Team in January of Y12.**

Roles include Head Boy and Head Girl; Deputy Head Boy and Deputy Head Girl; Student Presidents; Head of House; Social Committee and Events Manager and Chair of Charity Committee. These students work collectively and in smaller teams to develop the Sixth Form and School. Leadership training is included as well as the chance to make a difference. Recent projects have included introducing Mental Health Ambassadors and developing environmentally friendly initiatives. These roles also offer the chance to work with other Sixth Forms.

In response to the growing concerns regarding the environment by students and staff alike, I and the Shadow Student Leadership Team have established an Eco Club for students from Y7 all the way to Y13. Leading this club, I hope to improve the school's existing environmental policies, provide more in depth curriculum links to the environment, and represent the Farmor's School response to the current Climate Crisis.

**Head Boy Oliver Kocharski**



## Global Perspective

**Although Farmor's Sixth Form is tucked away in an idyllic Cotswold location, we encourage our students to have a global perspective. We support St Mary's School in Zambia which provides a safe, self-sufficient boarding school for up to 1000 girls. Not only do they gain an education, but they are protected from teenage marriage and motherhood.**

Similarly we support Mabaso Orphanage in South Africa. Not only do we fundraise to support these initiatives, but we run sports tours to South Africa and students can volunteer at St Mary's in their holidays. One of our alumni - Alex Eaglestone, now helps the Zambia Street Kids charity to coordinate student visits.





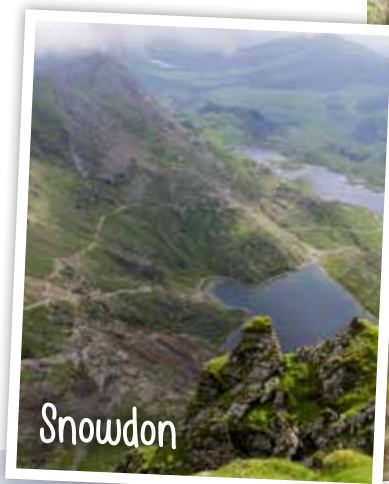


## DofE & Farmor's Walking Club

**Straight entry Duke of Edinburgh Gold Award is offered in the Sixth Form. It gives you a chance to do something completely new and take you out of your comfort zone. You will have to do an activity for each of the skills, volunteering and physical sections as well as an expedition and residential. Highly regarded by employers and universities, the challenge is worthwhile.**

### Farmor's Walking Club

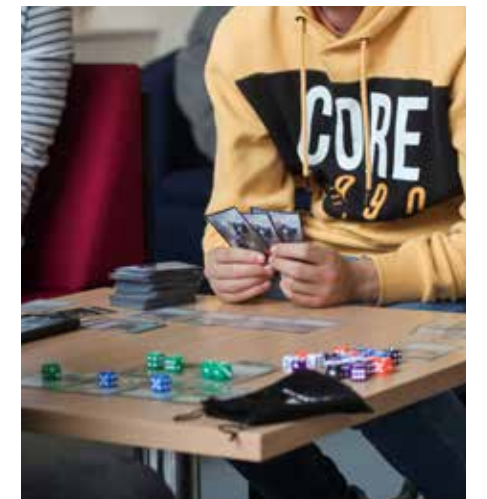
Every year we offer Y12 students the chance to sign up for some mountain walking. We walk the Malvern Ridge, climb Snowdon, complete the Yorkshire Three Peaks challenge and spend a final summer weekend in the lakes climbing the three highest peaks there. Probably one of the best experiences you will have!



## Enrichment

**Wednesday afternoons offer all Sixth Formers the chance to try a new skill or participate in an enrichment activity. A chance to chat, work together, unwind, be physical or just do something different is important for mental and physical health.**

- DofE
- Farmor's Walking Club
- Programming Raspberry Pi
- Horticulture Wellbeing Hub
- Sport
- Chess club
- Table Tennis
- 5 a-side football
- Crafts
- Music







## Choosing your courses

**Your study programme will have three A levels at its core. We offer an extensive range of subjects and ask you to choose three of these as the basis of your curriculum.**

You may choose these based on career ambitions at university or the workplace. For example, if you want to study Medicine, Chemistry must be one of your choices. If you want to study Law, History or English will be important. If you don't have an ambition at the moment, that is fine. You should choose on the basis of what you enjoy, are good at, or are interested in. You will have many opportunities to discuss your choices and options with experienced sixth form staff during the application process.

### Academic enrichment

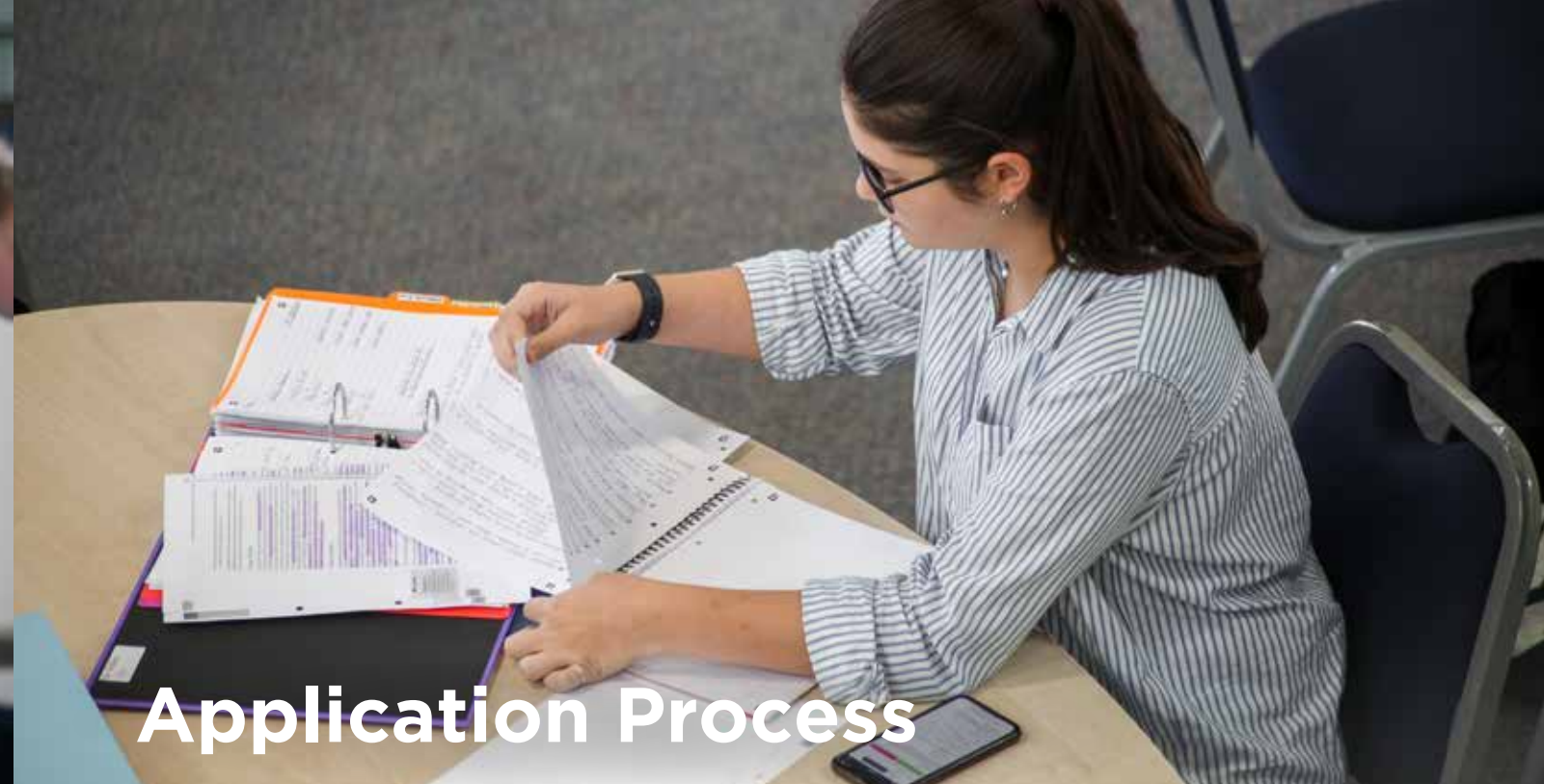
To your core three A levels, you can then add a further academic course if you wish. These are:

- The Extended Project Qualification
- Core Maths
- An additional A level.

For example, if you choose to study Geography, Psychology, Chemistry, Economics or Business, Core Maths would be a really useful addition that would complement the maths requirements in those A levels.

If you are studying Maths A level and have achieved a GCSE grade 8 or 9, you might like to add Further Maths, especially if you are thinking of studying Maths at university.

It is important to recognise that no universities require four A levels as a minimum. High achievement at GCSE would indicate suitability for four A levels; however, we believe a more balanced curriculum to be more beneficial for those intending to continue their studies at University level. Oxford and Cambridge universities explicitly prefer students to have three A levels and the EPQ, for example.



## Application Process

**New entrants regularly join us from many different schools and make up over 20% of our students each year.**

### Entry criteria

- A grade 4 in English and Maths plus at least 3 more GCSEs at grade 4 or above. Short courses do not count.
- Grade 4 or above in the subjects you are wishing to study at A level though a 5 grade would be desirable.
- Please note that some subjects have specific entry requirements, see the Subject Information pages.



### Deadlines

- **October 2021**  
Applications Open
- **Friday 28th January 2022**  
Application deadline
- **February/March 2022**  
Formal interview
- **July 2022**  
Preparatory information and handbooks
- **Thursday 18th August 2022**  
GCSE results day
- **Friday 19th August 2022**  
Enrolment deadline

### Financial support

We have a bursary programme to support students who might have financial barriers to their learning. This includes payments to help with transport costs, with materials and resources, with books. You will all be given the application form and information but please ask if you need help.

### Getting to Sixth Form

There are lots of buses and many of our students drive in once they have passed their test. There is no charge for this and there is a carpark at the front of the school. Some parents also set up lift-shares. If your household income is below £30,000 you can apply for financial support with bus fares.





Art & Design  
**Fine art**

**RESULTS 2019**  
**A\*-B 80% | A\*-C 100%**

**Entry Requirements:**  
Sixth Form entry criteria plus  
Minimum GCSE grade 5 in  
Graphics, Art or Photography



Art & Design  
**Digital Photography**

**RESULTS 2019**  
**A\*-B 83% | A\*-C 100%**

**Entry Requirements:**  
Sixth Form entry criteria plus  
Minimum grade 4 at GCSE in a  
creative subject\*

**You will further your skills and techniques in painting, drawing, printmaking, 3D alongside exploring, understanding and evaluating the work of Artists, Designers and Craftspeople.**

You will develop skills in Art analysis looking at Art and Design in a wider context. You will learn to talk about your own work alongside the work of others.

We will discuss career destinations and the ways that an Art and Design educational background offers a wide scope of career opportunities, not only in the creative sector but also within industry as more employers are looking for employees with creative skills.

**Exams:**

- 15-hour exam in Y13 which makes up 40% of the final grade.
- Y13 students follow their own personal artistic investigation, supported by their teachers. This includes a 3000-word essay alongside sketchbook development work leading to substantial final pieces. This makes up 60% of the final grade.
- Exam board: AQA

**Career opportunities:**

- Art Foundation Course

- Degree courses in Architecture (this course is a requirement for studying Architecture)
- Fashion Design
- Set Design and for Theatre and TV
- Graphic Design
- Animation
- Game design
- 3D design
- Engineering (alongside Maths)

The exam board moderator praised the department for promoting a high level of experimentation and pushing students in the development of their ideas. He also praised the high level of rigour in this course.

**Trips, industry links and work experience:**

- Artist and sculptor at Ernest Cook Trust
- Visiting artists
- Links with Stroud College
- Annual trip to such places as Barcelona, Paris, London and St Ives. A different place is visited each year so you will have the chance of at least two trips.



**Student Profile:**  
Gabe Fryer-Eccles

**Previous School**  
Sir Thomas Rich

**Studied** Fine Art, Maths, Geography & EPQ

**Achieved AAAA\*** and is now studying Architecture at UCL

**You will learn how to take good quality, well composed photographs, looking beyond the lens to use the digital camera as a tool to capture moments in time.**

You will work on portraiture and landscape projects, completing sketchbooks and boards for a display at the end of Y12. In Y13, you will choose your own genre of photography to research and develop.

**Exams:**

- The course is assessed in Y13 through a personal investigation including a 3000-word essay which makes up 60% of the grade and a final exam.
- 15-hour exam, the wide range of topics for which are released in March. Students are supported in preparing for this practical exam from March until May. This makes up 40% of the final grade.
- Exam board: AQA

**Career opportunities:**

- Sports' Photographer
- Fashion Photographer
- Advertising
- Journalism
- Teaching
- TV Work

**Trips, industry links and work experience:**

- Wimbledon Arts Studio: camera skills and portraiture shoot
- Landscape trips to the local area
- Arts trip to London or Europe

My son has enjoyed the mature relationship he has developed with Staff in 6th form. Here has been a great atmosphere to foster Independent learning. Thank you.

**Parental Exit Survey**



**Student Profile:**  
Stella Dalgleish

**Previous School**  
Farmor's

**Studied** Photography, English Language and Literature and French.

**Achieved A\*BC** and is studying Photography at the Glasgow School of Art

\*You will need your own Digital SLR camera and a basic knowledge of editing software would be an advantage





# Biology

**RESULTS 2019**  
**A\*-B 32% | A\*-C 76% | A\*-E 96%**  
**Entry Requirements:**  
 Sixth Form entry criteria plus  
 Grades 56 in combined science or 556  
 in separate sciences (6 in Biology) and grade  
 6 in maths. If grade 5 achieved in maths you  
 should also take the core maths option

**This highly regarded A level covers a wide range of both traditional and modern subject matters. It prepares students for numerous university courses and apprenticeships. It is a multidisciplinary course: data handling, mathematics (including statistics) and practical skills are all combined with a large theory content.**

Topics include means of transport in plants and animals, diseases, immune system, biodiversity, classification and evolution and the biochemistry of respiration and photosynthesis.

**Trips, industry links and work experience:**

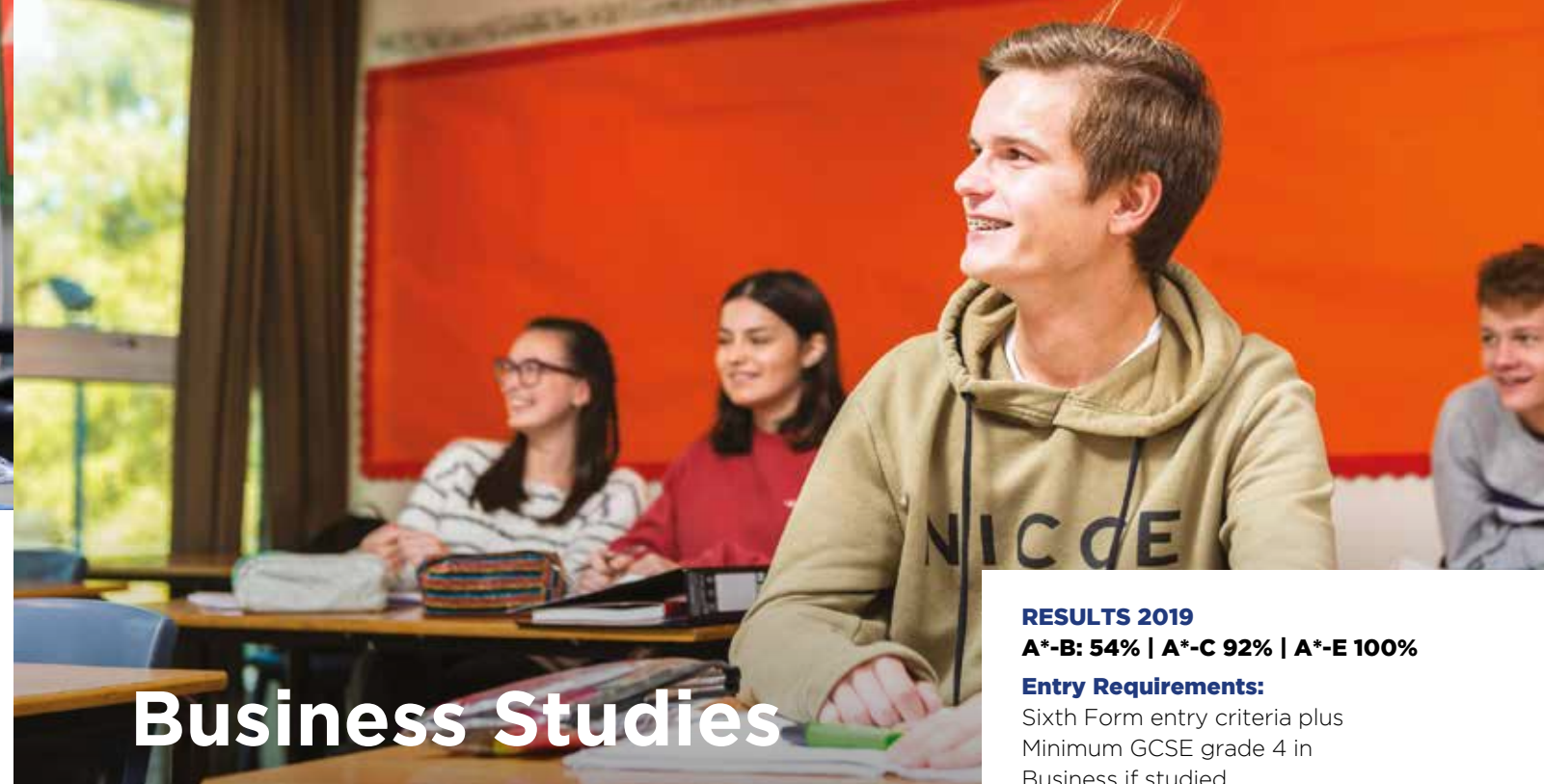
- Lecture days at Birmingham University
- Field trip

**Exams:**

- 3 exams at the end of Y13 plus a practical assessment course which leads to an endorsement qualification.
- Exam board: OCR

**Career opportunities:**

- Medicine
- Dentistry
- Environmental Science
- Food Industry
- Biochemistry
- Pharmaceutical Industry
- Psychology
- Sports Science
- Biotechnology
- Veterinary Science



# Business Studies

**RESULTS 2019**  
**A\*-B: 54% | A\*-C 92% | A\*-E 100%**  
**Entry Requirements:**  
 Sixth Form entry criteria plus  
 Minimum GCSE grade 4 in  
 Business if studied

**Business Studies will be of interest to anyone who wants a career in business, is thinking of starting their own business or is curious about how businesses are run.**

The course provides you with the opportunity to study how businesses in the real world operate and how they make decisions. By studying examples of real businesses, you will learn about a diverse range of areas such as marketing, human resources, international business, accounts and business strategy.

**Exams:**

- 3 exams at the end of Y13
- Exam board: Eduqas

**Career opportunities:**

Business provides a range of knowledge and skills which will be useful in almost any career. These include the ability: to critically analyse business situations and data, to write clearly about business issues, to work effectively as part of a team and to give business presentations.

A-level Business provides the opportunity for a range of options for further study and careers including:

- Business management
- Accountancy
- Human Resources
- Apprenticeships such as at St James's Place
- Sponsored degrees such as PWC Nottingham University

**Trips, industry links and work experience:**

- Study a wide range of local, national and international businesses.
- Business competitions
- Guest speakers

The subject and teaching is exceptional.

**Student Exit Survey**



**Student Profile:**  
 Henry Newman

**Previous School**  
 Farmor's

**Studied** Biology,  
 Physics, Maths and  
 EPQ

**Achieved AAAA** and is  
 studying Civil Engineering  
 at Bristol University



**Student Profile:**  
 Pippa Wildern

**Previous School**  
 Farmor's

**Studied** Business Studies,  
 Geography, English Literature  
 and EPQ

**Achieved AAAA**  
 and is studying Rural Land  
 Management at Royal  
 Agricultural University





# Chemistry

**RESULTS 2019**  
**A\*-B 38% | A\*-C 63% | A\*-E 100%**

**Entry Requirements:**

Sixth Form entry criteria plus Grades 66 in double science or 666 in triple and grade 6 in maths. If grade 5 achieved in maths you should also take the core maths option

**This course offers a solid foundation in all aspects of Chemistry. You will explore areas of study that include Organic Chemistry, Inorganic Chemistry and Physical Chemistry.**

In addition, you will develop a variety of practical skills, including use of scientific equipment, report writing, communication, logical thinking and reasoning as well as researching and managing risk through a range of activities.

**Exams:**

- 3 exams at the end of Y13 plus a practical assessment course which leads to an endorsement qualification.
- Exam board: OCR

**Career opportunities:**

Chemistry is a valuable subject in the world of work and can open the door to a variety of desirable career paths.

- Medicine
- Bio Chemistry
- Chemical Engineering
- Pharmacy

**Trips, industry links and work experience:**

- Medical Society links and work experience in a range of hospitals
- Range of speakers including Maxillofacial surgeon
- Science Live in Birmingham



**Student Profile:**  
Will Spurway

**Previous School**  
Farmor's

**Studied** Chemistry, Physics and Maths

**Achieved AAA** and is studying Medicine at Manchester University



# Computer Science

**A NEW COURSE IN 2019**  
**RESULTS 2021**  
**A\*-B 100%**

**Entry Requirements:**

Sixth Form entry criteria plus a keen interest in IT and how to use applications more effectively Grade 6 Computer Science Grade 6 Mathematics

**This course is designed to develop your knowledge and understanding a range of computing topics which will prepare you to solve complex and challenging tasks.**

Computer Science is a methodical subject that requires you to be logically minded, inquisitive and with a keen interest in how computers work. This course does not only cover the academic and technical aspects of computing, but it also allows you to use creative skills with software development.

**Exams/Assessments:**

Assessments will take place in the form of:

- An on-screen practical coding - 40%
- A written examination - 40%
- A non-examination assessment - 20%
- Exam board: AQA

**Career opportunities:**

In recent years, Computer Science has become one of the fastest growing subjects at both GCSE and A Level. It is a sought-after qualification for both universities and employers. Specialist roles could include:

- Cyber Security Specialist
- Information Systems Manager
- Network Engineer
- Software Developer
- Systems Analyst
- Degree in Computer Science
- Application Analyst
- Applications Developer
- Cyber Security Analyst
- Data Analyst
- Database Administrator
- Forensic Computer Analyst
- Games Developer
- Information Systems Manager

**Trips, industry links and work experience:**

- Workshops on Cyber security
- Workshops on programming
- Trips to Oxford University
- University of Gloucestershire
- GCHQ



**Student Profile:**  
Peter Hebden

**Previous School**  
Farmor's

**Studied** Computer Science, Maths, Further Maths and EPQ

**Achieved A\*A\*A\*A\*** and is studying Mathematics and Computer Science at Birmingham University



## Art & Design 3D Design

This is an Art & Design 3-Dimensional course run within the Design & Technology department. It is a meaningful and thought-provoking creative course which enables students to specialise in different areas of artistic strength in a 3D manner.

It covers a particularly wide range of activities ranging in scale from jewellery and body adornments to architectural and product or furniture design, which may also include single items of furniture that are concerned with functionality and manual skills as well as aesthetic qualities. Run with a fully equipped workshop students have the opportunity to specialise in different form of craftsmanship.

You will investigate historical, cultural and economic influences of design as well as how technology has influenced products we use every day. You will also explore the design and creation of products for the future.

### Exams:

- 40% Externally set assignment
- 60% Design and Make personal project
- Exam board: Eduqas

### Career opportunities:

- Industrial/Product designer
- Theatre set designer
- Designer for television and film
- Exhibition designer
- Packaging design
- Furniture design
- Interior designer
- Architectural model-maker
- Silversmith
- Jeweller

### Trips, industry links and work experience:

- Design Museum
- V&A Museum
- Barcelona
- Dyson
- Students are encouraged to build their own connections with outside professionals within industry

### RESULTS 2019 A\*-B 50% | A\*-C 100%

#### Entry Requirements:

Sixth Form entry criteria plus Minimum GCSE grade 5 in a design related subject such as Resistant Materials, Graphic Design, Product Design, Fine Art, Textiles or Photography



### Student Profile: Tabitha Roberts

**Previous School**  
Kingshill

**Studied** Product Design, Psychology, Business and EPQ

**Achieved ABCC** and is studying Advertising Design at the University of South Wales

## Art & Design Fashion & Textiles

### RESULTS 2019 A\*-B 50% | A\*-C 75% | A\*-E 100%

#### Entry Requirements:

Sixth Form entry criteria plus Minimum GCSE grade 4 in a design related subject such as Resistant Materials, Graphic Design, Product Design, Fine Art, Textiles, Photography, or Technical Award is ideal\*

This creative and thought-provoking A level gives you the practical skills and knowledge to succeed in the fashion and creative industries.

This course is suited to you if you are interested in fashion and art textiles. You will experiment with a wide range of fabrics and techniques before refining your ideas for the final assessed pieces in the second year.

### Exams:

- 40% externally set
- 60% through a project with the brief chosen by students
- Exam board: Eduqas

### Career opportunities:

- Art Foundation Course
- Costume Design for TV and Film
- Fashion Buying and marketing
- Set design and the film industry
- Fashion Journalism, online industry
- Apprenticeships in fashion and textiles
- Merchandising
- Fashion design
- Engineering
- Illustration and publishing
- Business management and fashion styling



### Trips, industry links and work experience:

- Cultural trip to New York
- Fashion and Textile Museum
- V&A Museum
- Design Museum



### Student Profile: Li Yang

**Previous School**  
Farmor's

**Studied** Textiles, Biology, Chemistry and EPQ

**Achieved BBCC** and is studying Biomedical Sciences at Southampton University

\*However, if you are enthusiastic about the creative aspects of this course and have not studied Art or D&T subjects we would still be keen to hear from you.





# Drama & Theatre

**RESULTS 2019**  
**A\*-B 19% | A\*-C 63% | A\*-E 100%**

**Entry Requirements:**  
 Sixth Form entry criteria plus  
 A minimum of a 4 grade in GCSE  
 Drama if studied or grade 4 in English

**This is a creative course on which you will watch, read and practically explore a range of plays, productions and practitioners in a variety of theatrical styles. This will help inform your own creativity as a theatre-maker in pieces that you devise, design and perform yourself.**

You will research the relationship between theory and practice and gain many invaluable skills in understanding how meaning is created for an audience through performance and design.

**Exams:**

- 40% written exam at the end of Y13
- 60% practical performance or design of text-based and devised work supported by a Working Notebook and Reflective Report
- Exam board: AQA

**Career opportunities:**

Students of Drama and Theatre develop skills that are not just essential for a career in the Arts but applicable to a wide range of higher education subjects and in the workplace. Whatever your future holds, as a student of A level Drama & Theatre, you will emerge with a toolkit of transferable skills to prepare you for your future.

- Teaching
- Law

- Business Leadership & Management
- Politics
- Media Studies
- Directing
- Acting
- Theatre Design
- Fashion
- Playwriting
- Lighting & Sound Design
- Dance
- Community Theatre & Education

**Trips, industry links and work experience:**

- Theatre trips to see a range of live productions
- Access to online recordings of live theatre productions
- Practical workshops with theatre-makers
- Work experience with local theatres such as The Barn



**Student Profile:**  
 Alfie Brown

**Previous School**  
 Farmor's

**Studied** Drama,  
 English Literature,  
 Geography and EPQ

**Achieved BCCC** and is  
 studying Journalism at  
 Cardiff University



# Economics

**RESULTS 2019**  
**A\*-B 55% | A\*-C 100%**

**Entry Requirements:**  
 Sixth Form entry criteria plus  
 Minimum GCSE grade 5 in English  
 and Mathematics

**The skills and knowledge developed when studying A-level Economics will be useful in a variety of careers and degree courses.**

Students are taught to think critically about a variety of economic issues, to develop the ability to write analytically, to use economic data to support arguments and to communicate clearly.

**Trips, industry links and work experience:**

- Business competitions
- Guest speakers
- Young Enterprise enrichment

**Exams:**

- There are 3 exams at the end of Y13
- Exam board: Edexcel

**Career opportunities:**

- Banking
- Accounting
- Management
- Economics Degree
- Business & Finance Degree
- Apprenticeships such as St James' Place
- Sponsored degrees such as KPMG



I would like to thank the school and sixth form for the education experience they have given my daughter and for the business and economics teachers who have given extra support and encouragement.

**Student Exit Survey**



**Student Profile:**  
 Alex Eaglestone

**Previous School**  
 Farmor's

**Studied** Economics,  
 Geography, Maths and  
 Further Maths AS

**Achieved AA\*AB** and is  
 studying Geography at  
 Loughborough





## English Language & Literature

**RESULTS 2019**  
A\*-B 52% | A\*-C 91% | A\*-E 100%

**Entry Requirements:**  
Sixth Form entry criteria plus  
Minimum GCSE grade 5 in English  
Literature and Language

**This course offers a fascinating insight into a diverse range of texts, both literary and non-literary. You will also have the opportunity to consider language in new ways and to write both creatively and analytically.**

The NEA – a language investigation of your own choosing – makes up 20% of the final grade. You will work independently on this with tutorial support from your teachers.

### Exams:

- 2 exams at the end of Y13 making up 80% of the final grade.
- Exam board: AQA

### Career opportunities:

English Language & Literature is regarded as a facilitating subject and is welcomed by universities for almost any degree course.

- Law Degree
- English degree
- Linguistics degree
- Journalism
- Education degree
- Publishing
- Creative writing
- Apprenticeships in journalism, marketing, publishing



### Trips, industry links and work experience:

- Creative writing opportunities
- Theatre trips.
- Swindon Poetry festival
- Cheltenham Literature Festival
- Lectures

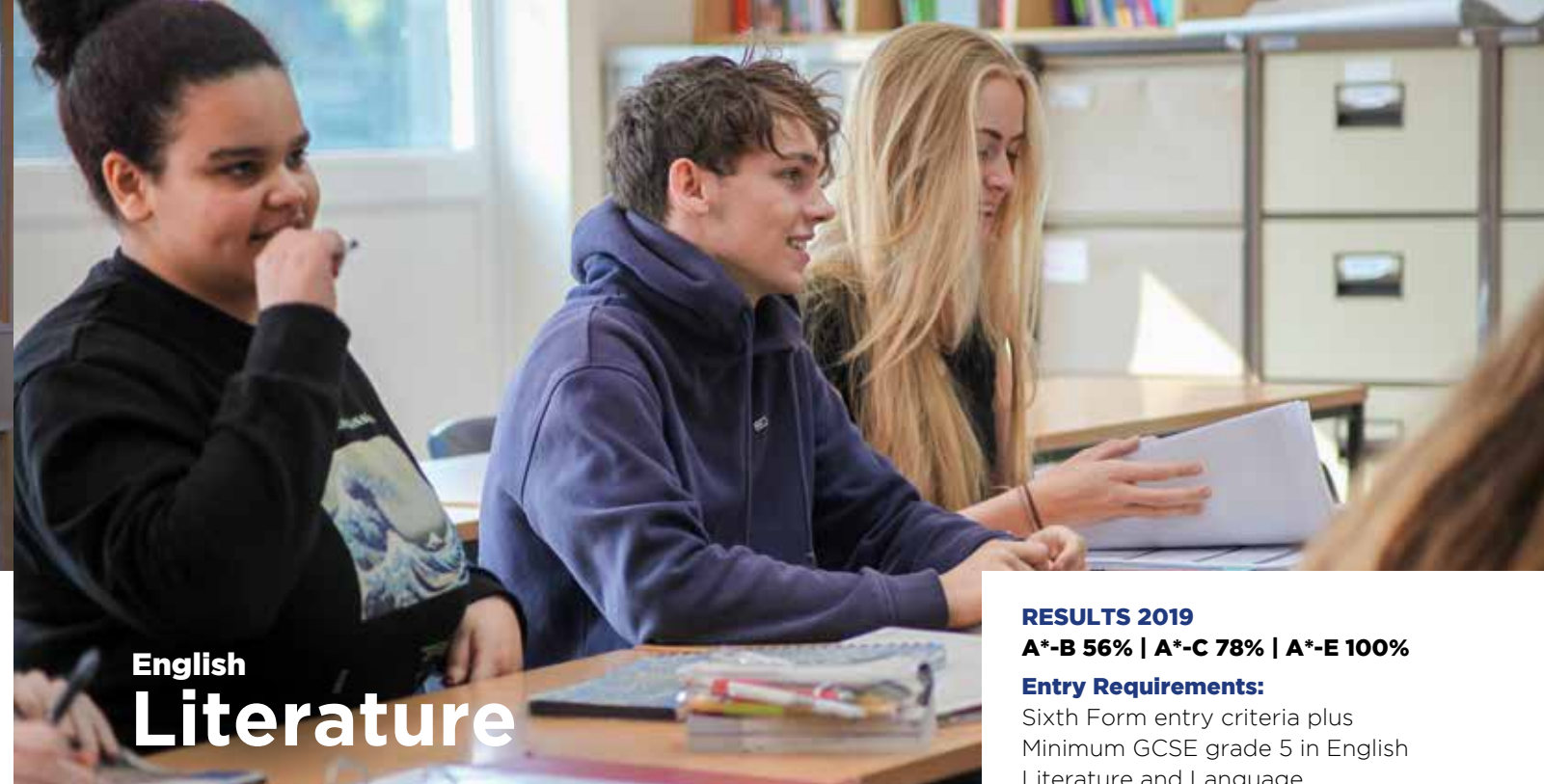


**Student Profile:**  
Hanna Doherty

**Previous School**  
Farmor's

**Studied** English language and Literature, History, French and EPQ

**Achieved** A\*A\*AA\* and is studying Modern and Medieval Languages at Cambridge.



## English Literature

**RESULTS 2019**  
A\*-B 56% | A\*-C 78% | A\*-E 100%

**Entry Requirements:**  
Sixth Form entry criteria plus  
Minimum GCSE grade 5 in English  
Literature and Language

**This course offers the perfect insight into the richness of English Literature, pushing well beyond the scope of GCSE. You will study texts from across the three genres: prose, poetry and drama, and will have the opportunity to immerse yourself in some of the finest literature written in English.**

A 3000-word coursework essay makes up 20% of the final grade. This is a comparative essay and you can choose any two texts of your choice. You will work independently on this with tutorial support from staff.

### Exams:

- 3 exams at the end of Y13 making up 80% of the final grade.
- Exam board: Edexcel

### Career opportunities:

English Literature is regarded as a facilitating subject and is welcomed by universities for almost any degree course.

- Law Degree
- English degree
- Linguistics degree
- Journalism
- Education degree
- Publishing
- Creative writing
- Apprenticeships in journalism, marketing, publishing

### Trips, industry links and work experience:

- Creative Writing Club (A level students work with lower school students on their creative writing)
- Theatre trips to see plays.
- Swindon Poetry festival
- Cheltenham Literature Festival
- Lectures

One of the strongest departments and even the most difficult essays are broken down and explained. They have allowed my confidence in essay writing to grow and both teachers are always approachable and no task is ever too much for them.

### Student Exit Survey



**Student Profile:**  
Charlotte Gleeson

**Previous School**  
Farmor's

**Studied** English Literature, French, Psychology and EPQ

**Achieved** A\*A\*A\*A\* and is studying Modern and Medieval Languages at Cambridge





# Extended Project Qualification

**RESULTS 2019**  
**A\*-A: 55% | A\*-B 84% | A\*-E 100%**  
**Entry Requirements:**  
Sixth Form entry criteria

**This is an independent research project in an area of your own interest. You are taught skills including academic research and referencing, presentation, decision-making and project management.**

A supervisor supports you with individual tutorials to progress your project. You will produce an artefact and report or a research essay of approximately 5000 words. Your production log records each stage of your journey.

- Exams:**
- 100% assessed through production log and essay / report and artefact. There is no exam.
  - Exam board: AQA

**Career opportunities:**  
EPQ is highly regarded by universities and employers because of the skills needed to be successful.

Many universities lower their entry requirements if students have an A in their EPQ.

EPQ is an opportunity to demonstrate an interest in a potential career path for which there is no A level, such as nursing, midwifery, law, politics, archaeology. This sets students apart.



- Trips, industry links and work experience:**
- There are strong links with Southampton University which delivers lectures.
  - You are strongly encouraged to undertake in any extra-activities which contribute to the project.
  - You are encouraged to pursue your field of interest beyond the school.



**Student Profile:**  
Toby Jack

**Previous School**  
Farmor's

**Studied EPQ,**  
Physics, Maths and Further Maths

**Achieved A\*A\*A\*A\*** and is studying Mechanical Engineering at Bristol University



# Level 3 Applied Certificate In Food Science & Nutrition

**A NEW COURSE IN 2019**  
**RESULTS 2021**  
**100% Distinction**  
**Entry Requirements:**  
Sixth Form entry criteria

**You will study how to meet the nutritional needs of specific groups. This will include exploring the properties of nutrients and how food production impacts on ingredients.**

It is also a strongly practical course including designing menus, meals and dishes as well as dietary plans for specific groups and preparing them. Complex cooking skills are also part of the course.

- Exams:**
- 50% Internal Assessment
  - 50% External Exam
  - Graded at Pass, Merit or Distinction
  - Exam board: WJEC

**Career opportunities:**  
This course supports progression into the fields of Health and Social care, Sport, understanding nutrition, government agencies and the public service sector. It is recognised by UCAS and so progression onto university courses is also open to you:

- Degree in Health and Social Care
- Degree in Nutrition
- Degree in Public Health Nutrition
- Degree in Food Science and Technology
- Social Services
- Catering Industry
- Hospitality Industry

- Trips, industry links and work experience:**
- Links with restaurants in Cheltenham for visits and visitors
  - Works experience at various restaurants is available
  - Links with Swindon College

The staff are very supportive and give many opportunities. There are many spaces to either study or relax.

**Student Exit Survey**



**Student Profile:**  
Hannah Sandman

**Previous School**  
Kingshill

**Studying** Food and Nutrition, Media, History and EPQ.

**Achieved** Distinction, B C A and is studying Nutrition at Cardiff Met.





Languages  
**French**

**RESULTS 2019**  
**A\*-B 67% | A%-C 100%**  
**Entry Requirements:**  
 Sixth Form entry criteria plus  
 Minimum GCSE grade 6 in French

**You will study current issues and trends in society as well as the cultural topics of religion, history, literature, art and film. You will also have half an hour per week of one-to-one speaking sessions to develop spoken French.**

This is a wonderful opportunity for you to immerse yourself in the language and culture of France and therefore gain a skill for life.

**Exams:**

- Listening, Reading & Writing 50%
- Writing on film and literature 20%
- Speaking on current trends in society 30%
- Exam board: AQA

**Career opportunities:**

French is regarded as a facilitating subject and is welcomed by universities for almost any degree course. Degree courses in languages, including Italian,

Japanese and languages not yet studied.

- Linguistics degrees
- TEFL courses
- Studying abroad
- Degrees in any subject with a year abroad option.
- Legal secretary
- Translation services

**Trips, industry links and work experience:**

- Exchange trips
- French newspaper available in the LRC
- Exchange trips and cultural trips

The small sixth form class sizes that you have been able to offer really do make a difference to the students' enthusiasm and outlook and we would recommend the school wholeheartedly. Thank you.

**Parental Exit Survey**



**Student Profile:**  
Molly Davis

**Previous School**  
Farmor's

**Studied** Biology, French, Chemistry and EPQ

**Achieved A\*ABA** and is studying Medicine at Cardiff University



**Geography**

**RESULTS 2019**  
**A\*-B 56% | A\*-C 81% | A\*-E 100%**  
**Entry Requirements:**  
 Sixth Form entry criteria plus  
 Minimum grade 4 in GCSE  
 Geography if taken

**Geography will inspire you to learn more about the world around you. The course is topical and will develop your perceptions and stimulate your investigative and analytical skills.**

Course content includes both Physical and Human Geography. Physical Geography covers water and carbon cycles as well as coastal landscapes. Human Geography covers global systems and governance as well as populations and the environment.

**Exams:**

- There are two equally weighted exams at the end of Y13 as well as a piece of coursework that makes up 20% of the final grade. This coursework is a 3000 to 4000 word individual investigation.
- Exam board: AQA

**Career opportunities:**

Geography is regarded as a facilitating subject and is welcomed by universities for almost any degree course.

- Degrees in Geography
- Degrees in Planning and Urban development
- Degrees in Anthropology
- Degrees in Oceanography
- Degrees in Environment Studies
- Degrees in Teaching Estate Management

**Trips, industry links and work experience:**

A residential trip to South Wales to investigate coastal landforms and urban developments. A trip to Bristol to study urbanisation first hand. Local trips including primary data collection of the hydrology of the River Coln. An international field trip is often offered to enhance your geographical understanding on a number of topics.



**Student Profile:**  
Eleanor Middleton

**Previous School**  
Farmor's

**Studied** ADG, Geography, Maths and EPQ

**Achieved A\*BA\*A\*** and is studying Architecture at UCL





# History

**RESULTS 2019**  
**A\*-B: 37% | A\*-C 89% | A\*-E 100%**  
**Entry Requirements:**  
 Sixth Form entry criteria plus  
 Minimum GCSE grade 4 in History  
 if taken. Minimum GCSE Grade 5 in  
 English Language

**You will study the Soviet Experiment and look at the controversies about why it collapsed. You will also study the division of Germany after WWII through to reunification from an East German perspective.**

In Y13 you will study the British empire 1763-1914 including the American Revolution, early Australian history, the abolition of slavery, the Indian Rebellion and much more. You will also have the opportunity to do an historical enquiry which is a 4000 word essay on an historical controversy of your choice.

**Exams:**

- 3 Exams at the end of Y13 which make up 80% of the final grade.
- The Historical Enquiry makes up 20% of the final grade.
- Exam board: Edexcel

**Career opportunities:**

History is regarded as a facilitating subject and is welcomed by universities for almost any degree course.

- Law degree
- Politics degree
- PPE degree
- Journalism
- International studies
- Many politicians have History degrees

**Trips, industry links and work experience:**

- Russia and East Berlin



**Student Profile:**  
Edward Conlan

---

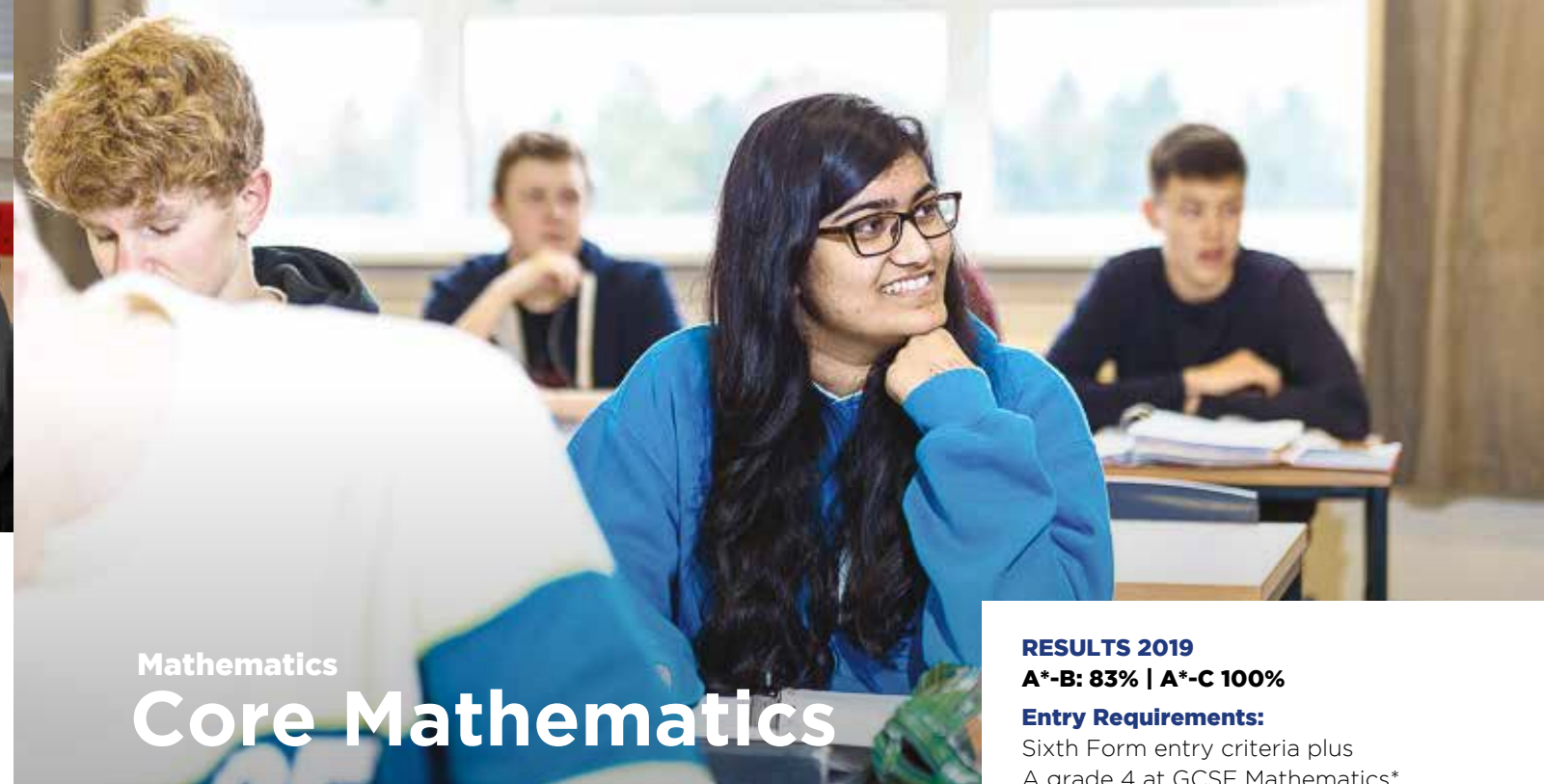
**Previous School:**  
Farmor's

---

**Studied:** History, English Literature, Psychology and EPQ

---

**Achieved AABA** and is studying Law at Bristol University



# Mathematics Core Mathematics

**RESULTS 2019**  
**A\*-B: 83% | A\*-C 100%**  
**Entry Requirements:**  
 Sixth Form entry criteria plus  
 A grade 4 at GCSE Mathematics\*

**Core Maths is a new course designed for post-16 students who want to continue studying maths. It will help you retain, deepen and extend your maths to be better prepared for higher education and employment.**

You will apply clear, mathematical reasoning to real-life problems, analyse and interpret data in various contexts and confidently deal with everyday financial maths. Core Maths is very different to GCSE maths.

**Exams:**

- There are 2 exam papers at the end of the 2 year course. This leads to a level 3 qualification, which carries the same UCAS points as an AS Level.
- Exam board: OCR

**Career opportunities:**

This course will improve your career prospects in many ways as taking maths after GCSE is highly desirable and this course will set you apart. These practical mathematical skills will help you in particular with biology, geography, business studies, psychology, and economics.

**Trips, industry links and work experience:**

- Learning to use Excel
- Learning about real life applications of maths including budgeting and costing



**We are very pleased that our son has settled so well in sixth form and that we have you to help support him.**

**Parent email**



**Student Profile:**  
Charlotte Blakeley

---

**Previous School:**  
Kingshill

---

**Studied:** Psychology, Fine Art, English Language and Literature, Core Maths and EPQ.

---

**Achieved** CBCDB and is studying Advertising and Marketing at the University of Lincoln

\*50% of our students take a maths course post 16





# Mathematics

**RESULTS 2019**  
**A\*-B 70% | A\*-C 91% | A\*-E 100%**  
**Entry Requirements:**  
 Sixth Form entry criteria plus  
 Minimum grade 7 in GCSE Mathematics

**You will study pure maths including extensive use of algebra, calculus and trigonometry as well as applied maths including statistics and mechanics focusing on how maths can be used to model the real world in order to solve problems.**

Mechanics overlaps strongly with Physics A-level whereas Statistics deals with probability, sampling data and statistical hypotheses which overlap with Geography, Psychology and Biology.

**Exams:**

- The final examinations consist of 3 two hour papers.
- Paper 1 – Pure Maths marked out of 100.
- Paper 2 – Pure Maths marked out of 100.
- Paper 3 – Applied Maths including Mechanics and Statistics also marked out of 100.
- Exam board: Edexcel

**Career opportunities:**

In an increasingly numerical world A-level maths is useful in a large number of degree courses and careers. It is a subject that is highly valued both by universities, as a facilitating subject, and employers for the problem solving skills it develops. It is essential for further study of:

- Mathematics
  - Statistics
  - Engineering
  - Physics
- It is desirable for:
- Other physical sciences
  - Computing
  - Architecture
  - Computer animation
  - Psychology and other social sciences
  - Actuary
  - Meteorology
  - Economics
  - Accounting
  - And numerous other careers rely on a good understanding of number.

**Trips, industry links and work experience:**

Previous students have completed work experience with a number of financial and engineering firms. The department is developing links with the local STEM (Science, Technology, Engineering and Mathematics) network which can arrange gap year placements with STEM firms.



**Student Profile:**  
Charlotte Pearce

**Previous School**  
Farmor's

**Studied** Maths, Chemistry, Geography and EPQ

**Achieved A\*A\*A\*A** and is studying Pharmacy at Cardiff University



# Further Mathematics

**RESULTS 2019**  
**A\*-B 67% | A\*-C 100%**  
**Entry Requirements:**  
 Sixth Form entry criteria plus  
 Minimum GCSE grade 8 in Mathematics

**You will choose Further Maths because of a real enthusiasm for maths, and an aspiration to further study in maths, engineering, the sciences and economics.**

You will explore complex numbers and matrices, as well as building your understanding and knowledge of sophisticated mathematical ideas and techniques. You can choose options to specialise in areas that are particularly relevant to your interests and aspirations.

**Exams:**

- The final examinations consist of 4 one and half hour papers. The first two papers are compulsory while paper 3 and 4 allow for a number of options.
- Paper 1 – Pure Maths marked out of 100.
- Paper 2 – Pure Maths marked out of 100.
- Paper 3 & 4 – More pure and applied maths options including Decision, Mechanics and Statistics also marked out of 100.
- Exam board: Edexcel

**Career opportunities:**

The students who choose to study Further Mathematics are more commonly the students who go

on to study Mathematics, Physics or Engineering at one of the Russell Group universities. Careers where Further Maths is highly desirable are those involved with mathematics at a high level.

These include:

- Statisticians
- Engineers
- Computer scientists
- Physicists
- Economists
- Actuary

**Trips, industry links and work experience:**

Previous students have completed work experience with a number of financial and engineering firms. The department is developing links with the local STEM (Science, Technology, Engineering and Mathematics) network which can arrange gap year placements with STEM firms.

There will also be the opportunity to compete in a number of mathematical competitions.



**Student Profile:**  
Lydia Nuttall

**Previous School**  
Farmor's

**Studied** Further Mathematics, Mathematics, and Physics

**Achieved ABC** and is studying Architecture, Urbanism and Building Sciences at Eindhoven University of Technology, Netherlands





# Media

**RESULTS 2019**  
**A\*-B 61% | A\*-C 72% | A\*-E 100%**

**Entry Requirements:**  
 Sixth Form entry criteria plus  
 GCSE grade 5 in Media if taken  
 GCSE grade 4 or above in  
 English Language

**You will study media in all its forms including TV programmes, music videos, video games, advertising, marketing, film making, newspapers, radio, magazines, the film industry and online media including blogs.**

You will also study the theory of media that will allow you to both analyse these forms of media and develop the skills to produce your own pieces.

**Trips, industry links and work experience:**

- Pamela Armstrong
- Speakers' Programme
- BBC

**Exams:**

- There are two exams at the end of Y13 as well as a piece of coursework for which you produce your own piece of media. This is worth 30% of the final grade.
- Exam board: WJEC

**Career opportunities:**

- Advertising
- Journalism
- Television / Film producing



Media at this school is very well taught and i feel confident in it, the feedback is detailed and you are clearly told how to improve. The coursework is very strong in how it is taught, it's clear and precise.

**Student Exit Survey**



**Student Profile:**  
 Harry Palmer

**Previous School**  
 Farmor's

**Studied** Media, Psychology, Business Studies, Economics (AS) and EPQ

**Achieved ABCBA** and is studying Communication, Media and Culture at Oxford Brookes University



# Music

**RESULTS 2020**  
**100% A\*-C**

**Entry Requirements:**  
 The ability to play an instrument or sing essential, ideally to Grade 5 standard and receiving regular private weekly tuition

**The Eduqas Music A Level is a relevant and contemporary qualification that offers you the chance to study a wide range of musical genres. It brings listening, performance and composition to life in new and engaging ways, and links to the world around us.**

We know that every student has different learning styles and musical tastes, which is why our course values all music styles, skills and instruments. You will be able to broaden your mind and foster your love of all music with a qualification that you will enjoy no matter what your ability or background is.

**Exams:**

- 1. Appraising music 40%
- 2. Performance 35% (Maximum of 12 minutes recorded performance)
- 3. Composition 25% (Maximum of 6 minutes)
- Exam board: Eduqas

**Career opportunities:**

There are a huge variety of potential careers available from studying this course. The Music industry is one of the biggest contributors to the UK economy. Music is constantly evolving, inspiring creativity and expression in a way that no other subject can and is designed to develop a broad

range of skills including project management, appraising and analysis, creativity and imagination. Students will be able to progress to undergraduate study in Music Performance, Popular Music Composition, Film and TV Sound and Production, Sound Engineering and many other courses requiring a similar skill set.

The subject can enhance a lifetime hobby as well as lead to a career in recording, sound engineering, composing for film and media, performing, teaching, radio or television work and studio work.

**Trips, industry links and work experience:**

- Trip to a West End Musical.
- Learn a musical instrument and have lessons in school.
- Christmas, Easter and Summer performance opportunities as part of choir, ukulele band or orchestra.
- Opportunities to lend and mentor younger musicians.



**Student Profile:**  
 Charlotte Staynings

**Previous School**  
 Kingshill

**Studied** Music, Psychology and English Language and Literature

**Achieved BBB** and is studying Psychology and Child Development at the University of Winchester





# Physical Education

**RESULTS 2018**  
**A\*-B 25% | A\*-C 75% | A\*-E 100%**  
(No entrants 2019)

**Entry Requirements:**  
Sixth Form entry criteria plus Minimum Grade 4 at GCSE PE if studied. Participation in a sport at club level with regular training outside school Grade 4 in a GCSE science is essential

**The course covers factors that affect performance in sport and activity as well as considering factors that affect optimal performance.**

**Exams:**

- 2 exam papers in Y13 plus a practical assessment making up 30% final grade.
- The practical assessment film evidence of performing at a competitive level and a written analysis linking to theory topics. This requires a current and serious commitment to one sport.
- Exam board: AQA

**Career opportunities:**

Sport and fitness is a huge industry. From pushing the boundaries of performance in elite sport through to amateur teams and individuals who need activity to maintain health, sport and fitness is a fast growing business. Physical Education has never played such an important part in society. It takes a multi-disciplinary approach, including social, physiological, biomechanical and psychological insights into understanding human performances and as such requires a broad range of academic skills. A level PE is regarded as an A level Science subject when applying to courses in different fields of study.

PE students are fit and healthy, good communicators and leaders, team players with good social skills. They have the ability to analyse, evaluate and self-reflect. These are qualities sought after by future employers.

A level PE/ Btec Sports and Exercise Science could lead you towards numerous university courses including:

- Sports studies
- Sports science
- Teacher training
- Leisure studies
- Sports management
- Events management
- Strength and conditioning
- Exercise and health
- Nutrition
- Sports rehabilitation
- Physiotherapy

**Trips, industry links and work experience:**

- Competitive sports competitions
- Sports tours have included Barcelona, Ireland, Italy, Barbados and various UK venues.

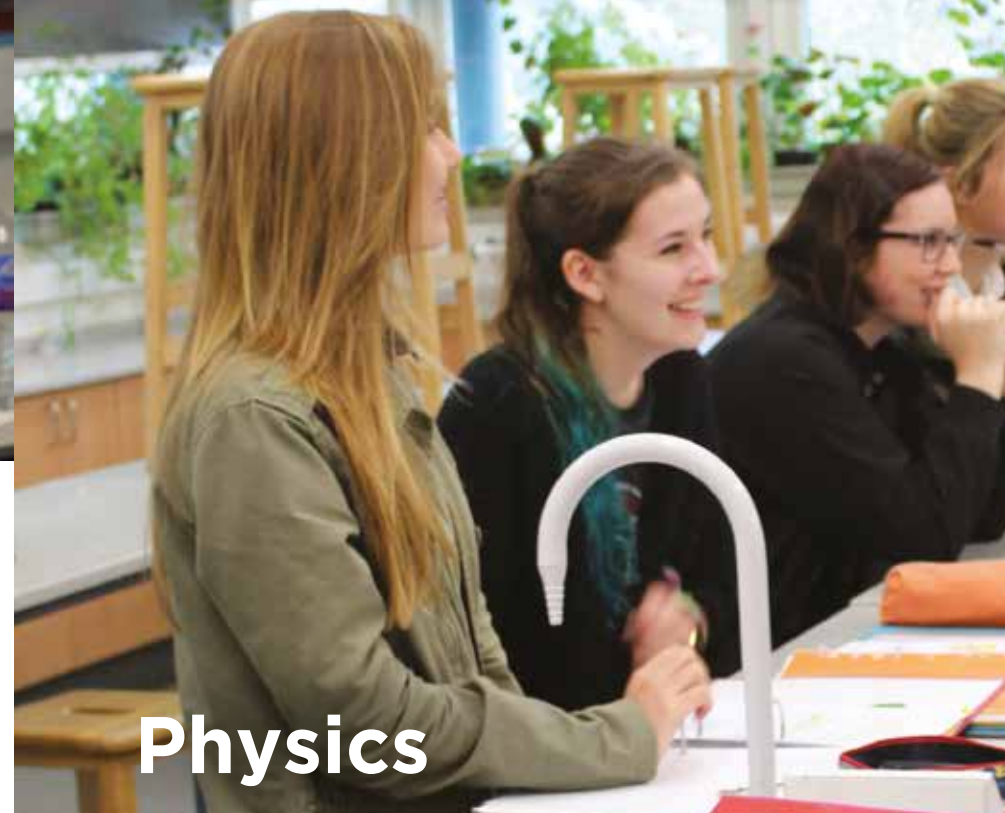


**Student Profile:**  
Sasha Gibbs

**Previous School**  
Farmor's

**Studied** PE, Maths and Biology

**Achieved AAB** and is studying Sports Science at Bath University



# Physics

**RESULTS 2019**  
**A\*-B: 45% | A\*-C 73% | A\*-E 100%**

**Entry Requirements:**  
Sixth Form entry criteria plus Grades 56 in double science or 556 in triple (6 in Physics) and grade 6 in maths. It is preferable to also study Maths at AS or A Level for this course.

**You will study core content including: measurements and their errors, particles and radiation, waves, mechanics and materials, electricity, thermal physics, fields and their consequences, nuclear physics and medical physics.**

**Exams:**

- 3 exams at the end of Y13 plus a practical assesment course which leads to an endorement qualification.
- Exam board: AQA

**Career opportunities:**

- Potential careers available from this course:
- Architecture degree
  - Engineering degree or apprenticeships
  - Medical degree (most medical courses require Chemistry and another science)
  - Mechanical Engineering
  - Astro-physics degree

**Trips, industry links and work experience:**

- Honda Car Plant
- Intel Microchip processor plant
- Annual trip to CERN in Geneva to explore the Hadron Collider and associated scientific museums and research facilities.



**Student Profile:**  
Christina Elliott

**Previous School**  
Farmor's

**Studied** Physics, Maths, Further Maths and EPQ

**Achieved A\*A\*AA** and is studying Actuarial Science and Mathematics at Manchester University





# Psychology

**RESULTS 2019**  
**A\*-B 57% | A\*-C 86% | A\*-E 96%**

**Entry Requirements:**  
Sixth Form entry criteria plus  
If Maths GCSE grade is below 6  
then Core Maths must be taken  
as well

**Psychology is a fascinating and incredibly popular area of study. It will help you understand human behaviour and mental processes and allow you to better understand how we think, act and feel.**

Why do people act the way they do? What shapes our personality? How do we learn and change throughout our life? Psychology develops valuable skills such as analysis of evidence, reasoning and evaluation.

**Exams:**

- 3 exams all of 2 hour duration at the end of Y13.
- Exam board: AQA

**Career opportunities:**

- Professional Psychology e.g. Clinical, Forensic, Occupational
- Advertising & Marketing
- Social Work
- Teaching
- Nursing
- Counselling

**Trips, industry links and work experience:**

- Exam Preparation courses
- Phillip Zimbardo Conference
- Social Sciences Conference

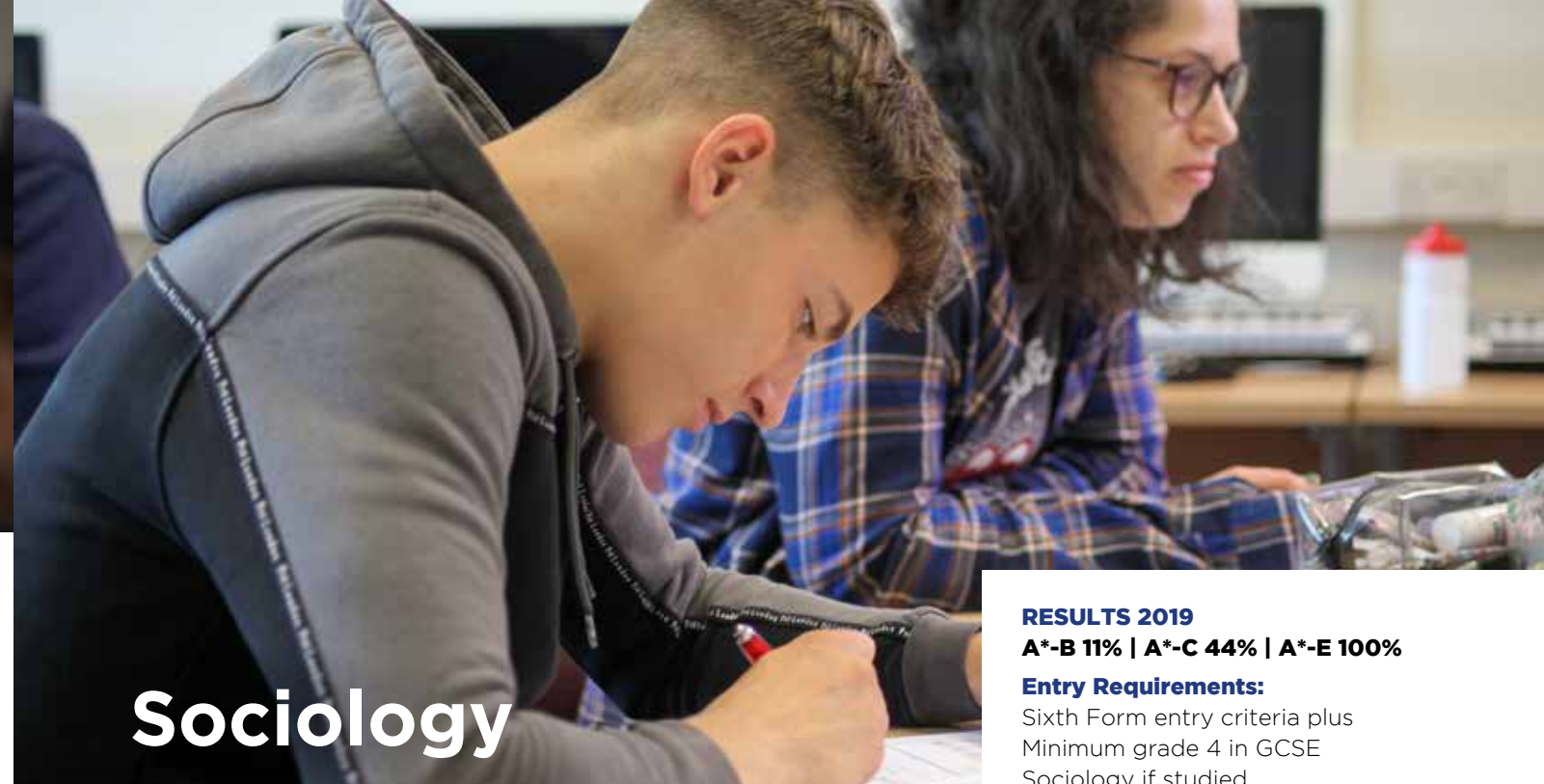


**Student Profile:**  
Ellie Barnes

**Previous School**  
Farmor's

**Studied** Psychology,  
Biology and Chemistry

**Achieved A\*A\*A** and  
is studying Medicine at  
the University of Bristol



# Sociology

**RESULTS 2019**  
**A\*-B 11% | A\*-C 44% | A\*-E 100%**

**Entry Requirements:**  
Sixth Form entry criteria plus  
Minimum grade 4 in GCSE  
Sociology if studied

**You will study many different aspects of society and acquire critical understanding of the sociological research methods to evaluate them.**

Areas of study include poverty and wealth amongst different social groups, welfare provision and the importance of work, unemployment and education, global developments like inequality, globalisation and population growth as well as crime and deviance, considering the different social, psychological and cultural influences.

**Exams:**

- 3 exams at the end of Y13
- Exam board: AQA

**Career opportunities:**

The most obvious career directions are Nursing, Social Work and Teaching. However, students also go on to become lawyers, managers, journalists and police officers. It is a very useful course for developing your understanding of society and facilitates entry onto many university courses.

**Trips, industry links and work experience:**

- A range of speakers in the speakers' programme.
- Social Sciences Conference



Sixth form has been fantastic for my daughter. She has been encouraged to mature and be a far more independent learner and we can't believe the improvement she has made.

**Parental Exit Survey**



**Student Profile:**  
David Chimbaza

**Previous School**  
Highworth Warneford

**Studying** Sociology,  
English Literature,  
Business Studies and EPQ

**Ambition** to study  
Business Management at  
UCFB University





Languages  
**Spanish**

**RESULTS 2019**  
**A\*-B 75% | A\*-D 100%**

**Entry Requirements:**  
Sixth Form entry criteria plus  
Minimum GCSE grade 6 in  
Spanish

**You will study current issues and trends in society as well as the cultural topics of religion, history, literature, art and film.**

You also have half an hour per week of one-to-one speaking sessions to develop spoken Spanish. This is a wonderful opportunity for you to immerse yourself in the language and culture of Spain and therefore gain a skill for life.

**Exams:**

- At the end of Y13
- Listening, Reading & Writing 50%
- Writing on film and literature 20%
- Speaking on current trends in society 30%
- Exam board: AQA

**Career opportunities:**

Spanish is regarded as a facilitating subject and is welcomed by universities for almost any degree course.

Degree courses in languages, including Italian, Japanese and languages not yet studied.

- Linguistics degrees
- TEFL courses
- Studying abroad
- Degrees in any subject with a year abroad option
- Legal secretary
- Translation services

**Trips, industry links and work experience:**

- European exchange trips
- Exchange trips and cultural trips



**Student Profile:**  
Annabelle Foley

**Previous School**  
Kingshill

**Studied** Spanish,  
Psychology and Biology

**Achieved BBC** and after enjoying a gap year is studying Psychology at Oxford Brookes University

I am very happy with the 6th form, and both my children have benefited hugely from the encouragement, support and ethos.

**Parental Exit Survey**



**Next steps**

**Our UCAS system is second to none: 90% of our students gain a place at their first choice university, including Oxford, Cambridge, and medical courses.**

Other popular destinations include gap years, apprenticeships, drama schools, art colleges and employment. Whatever your ambition, there is individual support, advice and guidance to help you on your way.

In addition, you will be emailed a weekly careers bulletin with a round-up of all the new opportunities available locally, nationally and globally.

In addition to locations around the UK, we have also had students move on to destinations in California, Florida, Finland, Holland, Zurich, Spain, Thailand and even Australia.







Farmor's School  
AN ACADEMY

SIXTH  
FORM

**Farmor's School**

The Park  
Leafield Road  
Fairford  
Gloucestershire  
GL7 4JQ

Tel: 01285 712302

[www.farmors.gloucs.sch.uk](http://www.farmors.gloucs.sch.uk)

---

**For further information please visit:** [www.farmors.gloucs.sch.uk](http://www.farmors.gloucs.sch.uk) or call 01285 712302